

**SERVICE PARTS CATALOGUE  
LISTE DE PIECES DE RECHANGE  
ERSATZTEILLISTE  
CATALOGO PEZZI DI RICAMBIO  
ONDERDELENLIJST**

**SPERRY  NEW HOLLAND**

**MERCEDES-BENZ ENGINES  
MODELS OM 421  
OM 421A (Turbo)**

**ISSUE 497049 7**

3 of 3

FUEL FILTER  
 FILTRE A COMBUSTIBLE  
 KRAFTSTOFFFILTER  
 FILTRO COMBUSTIBILE  
 BRANDSTOFFFILTER

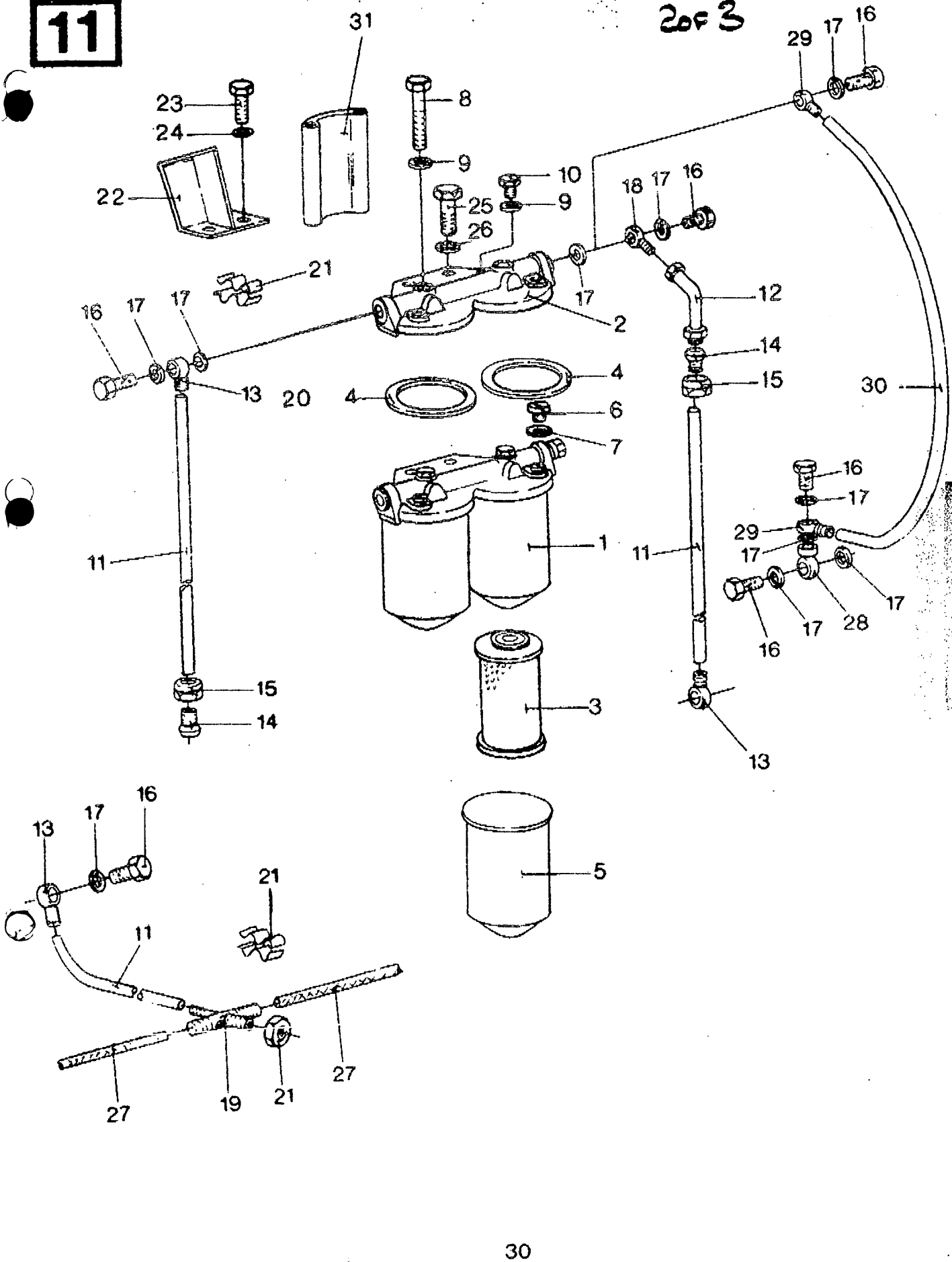
Fig.	Mercedes Part No.	Qty.		Code	Description	N.B.
		421	421A			
1	422 090 01 52	1	1		Fuel filter assembly	
2	422 092 01 08	1	1		Cover	
3	422 090 00 51	2	2		Fuel filter element kit	S.N.H. Order Ref. 450333 0 Incl. fig. 4
4	000 447 31 80	2	2		Seal ring	
5	422 090 00 07	2	2		Housing	
6	000908 014001	2	2		Threaded plug	
7	007603 014104	2	2		Seal ring	
8	000931 008251	2	2		Hex. cap screw	
	403 070 51 71		1		Hex. cap screw	
9	007603 008109	3	3		Seal ring	
	007603 008103		2		Seal ring	
10	000 074 51 71	1	1		Screw plug	
11	008 997 54 82	3	2		Hose	Order by the meter
12	314 180 03 58	1			Elbow	
13	915052 008000	3	1		Banjo nipple	
14	001 997 49 72	2	1		Ferrule	
15	915017 010201	2	1		Jam nut	
16	915036 010100	3	4		Hollow screw	
17	007603 014104	AR	AR		Seal ring	
18	915009 008000	1			Banjo nipple	
19	403 070 00 95	1	1		Nipple	
20	080705 016003	1	1		Coupler nut	
21	000 995 12 65	1			Clamp	
22	421 090 01 41	1			Support	
23	000933 008147	3	2		Hex. cap screw	
24	000125 008418	3	2		Washer	
25	000961 012097	2			Hex. cap screw	
	000961 012122		2		cap screw	
26	000137 012203	2			Lockwasher	
27	407 997 64 82	2	2		Hose	Order by the meter
28	000 990 03 88		1		Banjo nipple	
29	915052 008000		2		Banjo nipple	
30	008 997 54 82		1		Hose	Order by the meter
31	421 090 00 40		1		Support	

GROUP

11

421  
11

2 of 3



TOTAL

**SERVICE PARTS CATALOGUE  
LISTE DE PIECES DE RECHANGE  
ERSATZTEILLISTE  
CATALOGO PEZZI DI RICAMBIO  
ONDERDELENLIJST**

**MERCEDES-BENZ ENGINES  
MODELS OM 421  
OM 421A (Turbo)**

**REPLACES ISSUES  
REPLACE EDITIONS  
ERSETZT AUSGABEN  
SOSTITUISCE EDIZIONI  
VERVANGT UITGAVEN**

**496923 - 497017**

**ISSUE 497049 7**

**SPERRY  NEW HOLLAND**

**B-8210 ZEDELGEM — BELGIÉ  
TEL.: 050/20 00 20  
Telegr.: NEWHOLZED  
Telex.: 81127 & 81377  
© 1984 SPERRY N.V.**

## GENERAL INFORMATION

### ABBREVIATIONS AND SYMBOLS (as used in this publication)

Qty	=	Quantity	eng.	=	engine
AR	=	As Required	w/a	=	weld assembly
NS	=	Not Serviced	Incl.	=	Includes
NSS	=	Not Serviced Separately	Std	=	Standard
—	=	See column headed "N.B."	D	=	Diameter
*	=	Refer to a footnote	LH	=	Left-hand (viewed from the flywheel)
●	=	Seal kit	RH	=	Right-hand (viewed from the flywheel)
▲	=	Seal repair kit			
■	=	Valve overhaul kit			

### ORDERING SERVICE PARTS

#### VERY IMPORTANT NOTE !

Only the **oil filter element** and the **fuel filter element (S.N.H. Order Ref. no. in the column "NB")** are available through the Sperry New Holland Dealer.  
All the other part numbers in this catalogue are **MERCEDES PART NUMBERS** and must be ordered through the **LOCAL MERCEDES DEALER** and **NOT** through Sperry New Holland.

To prevent delay, always provide the following information to the dealer with your order:

1. Model of the engine (Engine type) : MERCEDES OM . . . / .....  
Serial number (Engine number) : .....
2. Number, discription and quantity of the part(s) required
3. The method of shipment and your address.

**ALWAYS USE GENUINE PARTS**

# CONTENTS

	Group	
	421	421 A
Cylinder head and valve cover .....	1	1
Cylinder block .....	2	2
Oil sump and timing housing .....	3	3
Crankshaft, connecting rods and pistons .....	4	4
Camshaft, rocker shaft and valves .....	5	5
Oil pump .....	6	6
Oil cooler and oil filter .....	7	7
Inlet, exhaust and manifolds .....	8	—
Inlet, exhaust and manifolds .....	—	9
Turbo charger .....	—	10
Fuel filter .....	11	11
Fuel injection pump assembly and fuel lines .....	12	12
Water pump and thermostat .....	13	13
Starter motor .....	14	14
Engine support and lifting brackets .....	15	15
Index .....	98	98

## INFORMATION IMPORTANTE

### ABBREVIATIONS ET SYMBOLES

Qty	=	Quantity = Quantité	eng.	=	engine = moteur
AR	=	As Required = Selon besoin	w/a	=	weld assembly = ensemble soudé
NS	=	Not Serviced = N'est pas disponible	Incl.	=	Includes = Comprend
NSS	=	Not Serviced Separately = N'est pas disponible séparément	Std	=	Standard
—	=	Voir colonne "N.B."	D	=	Diameter = Diamètre
*	=	Se réfère à une note en bas de la page	LH	=	Left-hand = Côté gauche (vu du côté volant)
●	=	Seal kit = Kit de joints	RH	=	Right-hand = Côté droit (vu du côté volant)
▲	=	Seal repair kit = Kit de joints et de réparation			
■	=	Valve overhaul kit = Kit de réparation			

### COMMANDE DE PIECES DE RECHANGE

#### NOTE TRES IMPORTANTE !

Seulement l'élément du filtre à huile et l'élément du filtre à combustible (S.N.H. Order Ref. no. dans la colonne "NB") sont disponibles auprès de votre agent Sperry New Holland.  
Tous les autres numeros figurant dans ce catalogue sont des **NUMEROS DE PIECE MERCEDES** et doivent être commandés au **CONCESSIONNAIRES MERCEDES LOCAL en NON** à Sperry New Holland.

Pour éviter toute perte de temps, mentionnez les points suivants dans vos commandes:

1. Modèle de votre moteur (Engine type) : MERCEDES OM . . . / .....  
Numéro de série (Engine number) : .....
2. Numéro, description et quantité des pièces désirées
3. Mode d'envoi et votre adresse complète.

**UTILISEZ UNIQUEMENT DES PIECES D'ORIGINE**

## TABLE DES MATIERES

	<b>Groupe</b>	
	421	421 A
Culasse et couvercle de culasse .....	1	1
Bloc — cylindres .....	2	2
Carter et couvercle de distribution .....	3	3
Villebrequin, bielles et pistons .....	4	4
Arbre à cames, culbuteurs et soupapes .....	5	5
Pompe à huile .....	6	6
Echangeur de température et filtre à huile .....	7	7
Collecteurs d'admission et d'échappement .....	8	—
Collecteurs d'admission et d'échappement .....	—	9
Turbocompresseur .....	—	10
Filtre à combustible .....	11	11
Pompe d'injection (complète) et canalisations d'injection .....	12	12
Pompe à eau et thermostat .....	13	13
Démarrreur .....	14	14
Support de moteur et yeux de levage .....	15	15
Index .....	98	98



## WICHTIGE INFORMATION

### ABKÜRZUNGEN UND SYMBOLE

Qty	= Quantity = Quantität	eng.	= engine = Motor
AR	= As Required = Nach Bedarf	w/a	= weld assembly = Geschweißte Gruppe
NS	= Not Serviced = Nicht lieferbar	Incl.	= Includes = Enthält
NSS	= Not Serviced Separately = Nicht separat lieferbar	Std	= Standard
—	= Siehe Spalte "N.B."	D	= Diameter = Durchmesser
*	= Bezieht sich auf eine Fußnote	LH	= Left-hand = Links (von Schwungradseite gesehen)
●	= Seal kit = Dichtungensatz	RH	= Right-hand = Rechts (von Schwungradseite gesehen)
▲	= Seal repair kit = Dichtungen- und Reparatursatz		
■	= Valve overhaul kit = Reparatursatz		

### BESTELLEN DER ERSATZTEILE

#### SEHR WICHTIGE ANMERKUNG !

Nur das **Ölfilterelement** und das **Kraftstofffilterelement** (S.N.H. Order Ref. no. in der Spalte "NB"), können bei Ihren Sperry New Holland-Händler bezogen werden.  
Alle übrigen Teilnummern in dieser Ersatzteilliste sind **MERCEDES-TEILNUMMERN** und müssen beim **ZUSTÄNDIGEN MERCEDES-HÄNDLER** und **NICHT** bei Sperry New Holland bestellt werden.

Um Zeitverlust zu vermeiden: Beachten Sie bitte folgende Hinweisung wenn Sie eine Bestellung machen.

1. Typ des Motors (Engine type) : MERCEDES OM . . . / .....  
Seriennummer (Engine number) : .....
2. Nummer, Beschreibung und Stückzahl der gewünschten Ersatzteile
3. Die Versandart und Ihre richtige Anschrift

### GEBRAUCHEN SIE NUR ORIGINALERSATZTEILE

# INHALT

	Gruppe	
	421	421 A
Zylinderkopf und Ventildeckel .....	1	1
Zylinderblock .....	2	2
Ölwanne und Steuerungsgehäuse .....	3	3
Kurbelwelle, Pleuelstangen und Kolben .....	4	4
Exenterwelle, Stösser und Ventile .....	5	5
Ölpumpe .....	6	6
Wärmetauscher und Ölfilter .....	7	7
Einlas und Auspuffsammelrohre .....	8	—
Einlas und Auspuffsammelrohre .....	—	9
Turbolader .....	—	10
Kraftstofffilter .....	11	11
Einspritzpumpe (komplett) und Einspritzleitungen .....	12	12
Wasserpumpe und Thermostat .....	13	13
Anlasser .....	14	14
Motorstütze und Hebeösen .....	15	15
Index .....	98	98

## INFORMAZIONE IMPORTANTE

### ABBREVIAZIONI E SIMBOLI

Qty	= Quantity = Quantità	eng.	= engine = motore
AR	= As Required = Secondo necessità	w/a	= weld assembly = gruppo saldato
NS	= Not Serviced = Non disponibile	Incl.	= Includes = Comprende
NSS	= Not Serviced Separately = Non disponibile separatamente	Std	= Standard
—	= Vedi colonna "N.B."	D	= Diameter = Diametro
*	= Si riferisce a una nota a basso della pagina	LH	= Left-hand = Lato sinistro (visto dal lato volano)
●	= Seal kit = Kit di giunti	RH	= Right-hand = Lato destro (visto dal lato volano)
▲	= Seal repair kit = Kit de giunti e di riparazione		
■	= Valve overhaul kit = Kit di riparazione		

### ORDINE DI PEZZI DI RICAMBIO

#### NOTA MOLTO IMPORTANTE !

Soltanto l'elemento del filtro olio e l'elemento del filtro carburante (S.N.H. Order Ref. no. nella colonna "NB") sono disponibili presso il vostro concessionario Sperry New Holland. Tutti gli altri numeri nel questo catalogo sono **NUMERI MERCEDES** e devono essere ordinati presso il vostro **CONCESSIONARIO MERCEDES LOCALE** e **NON** a Sperry New Holland.

Nell'ordinare i pezzi di ricambio citare sempre il dati qui di seguito indicati:

1. Tipo del motore (Engine type) : MERCEDES OM . . . . / .....
- Numero di serie (Engine number) : .....
2. Numero e quantità dei pezzi desiderati
3. Indirizzo e mezzo di spedizione.

**USATE SOLTANTO PEZZI DI RICAMBIO ORIGINALI**

## INDICE

	<b>Gruppo</b>	
	421	421 A
Testa e coperchi valvole .....	1	1
Monoblocco .....	2	2
Coppa olio e coperchi .....	3	3
Albero motore, bielle e pistoni .....	4	4
Albero eccentrico, punterle e valvole .....	5	5
Pompa olio .....	6	6
Scambiatore di calore e filtro olio .....	7	7
Collectori di aspirazione e di scarico .....	8	—
Collectori di aspirazione e di scarico .....	—	9
Turbocompressore .....	—	10
Filtro combustibile .....	11	11
Pompa iniezione (completa) e tubazioni iniettori .....	12	12
Pompa acqua e termostato .....	13	13
Motorino di avviamento .....	14	14
Supporto del motore ed occhi di sollevamento .....	15	15
Indici .....	98	98

## BELANGRIJKE INFORMATIE

### AFKORTINGEN EN SYMBOLEN

Qty	=	Quantity = Hoeveelheid	eng.	=	engine = motor
AR	=	As Required = Naar believen	w/a	=	weld assembly = lasgroep
NS	=	Not Serviced = Kan niet besteld worden	Incl.	=	Includes = Bevat
NSS	=	Not Serviced Separately = Wordt niet afzonderlijk geleverd	Std	=	Standard = Standaard
—	=	Zie in kolom "N.B."	D	=	Diameter = Diameter
*	=	Zie voetnota	LH	=	Left-hand = Linkse kant (gezien vanaf het vliegwiel
●	=	Seal kit = Afdichtingskit	RH	=	Right-hand = Rechtse kant (gezien vanaf het vliegwiel
▲	=	Seal repair kit = Afdichtings- en herstelkit			
■	=	Valve overhaul kit = Algemene herstelkit			

### HET BESTELLEN VAN WISSELSTUKKEN

#### ZEER BELANGRIJKE NOTA !

Enkel het **oliefilterelement** en het **brandstoffilterelement** (S.N.H. Order Ref. no. in de kolom "NB") zijn verkrijgbaar via uw Sperry New Holland vertegenwoordiger.  
Alle overige stuknummers in deze catalogus zijn **MERCEDES STUKNUMMERS** en dienen besteld te worden via de **LOCALE MERCEDES VERTEGENWOORDIGER** en **NIET** via Sperry New Holland.

Om tijdverlies te vermijden, doe Uw bestellingen met opgave van:

1. Model van uw motor (Engine type) : MERCEDES OM . . . / .....  
Serienummer (Engine number) : .....
2. Nummer, beschrijving en hoeveelheid van de gewenste wisselstukken.
3. Verzendingswijze en uw volledig adres.

### GEBRUIK ALTIJD ORIGINELE WISSELSTUKKEN

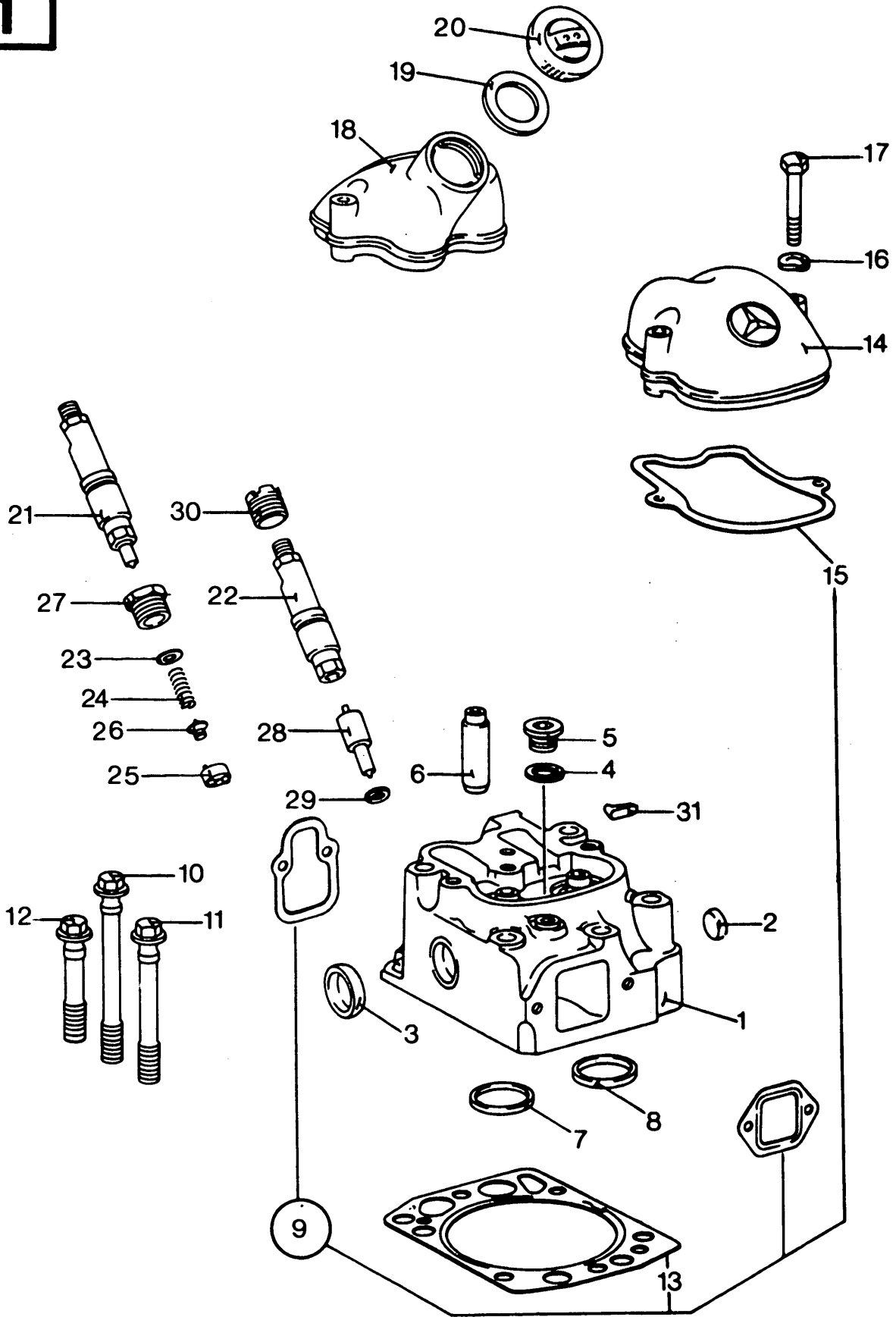
# INHOUD

	<b>Groep</b>	
	421	421 A
Cilinderkop en kleppendecksel .....	1	1
Cilinderblok .....	2	2
Oliepan en distributiedeksel .....	3	3
Krukas, drijfstangen en zuigers .....	4	4
Nokkenas, stangen en kleppen .....	5	5
Oliepomp .....	6	6
Oliekoeler en oliefilter .....	7	7
Spruitstukken .....	8	—
Spruitstukken .....	—	9
Turbocompressor .....	—	10
Brandstoffilter .....	11	11
Injectiepomp (compleet) en injectieleidingen .....	12	12
Waterpomp en thermostaat .....	13	13
Startmotor .....	14	14
Motorsteun en hefogen .....	15	15
Index .....	98	98

NOTES

**Codes**



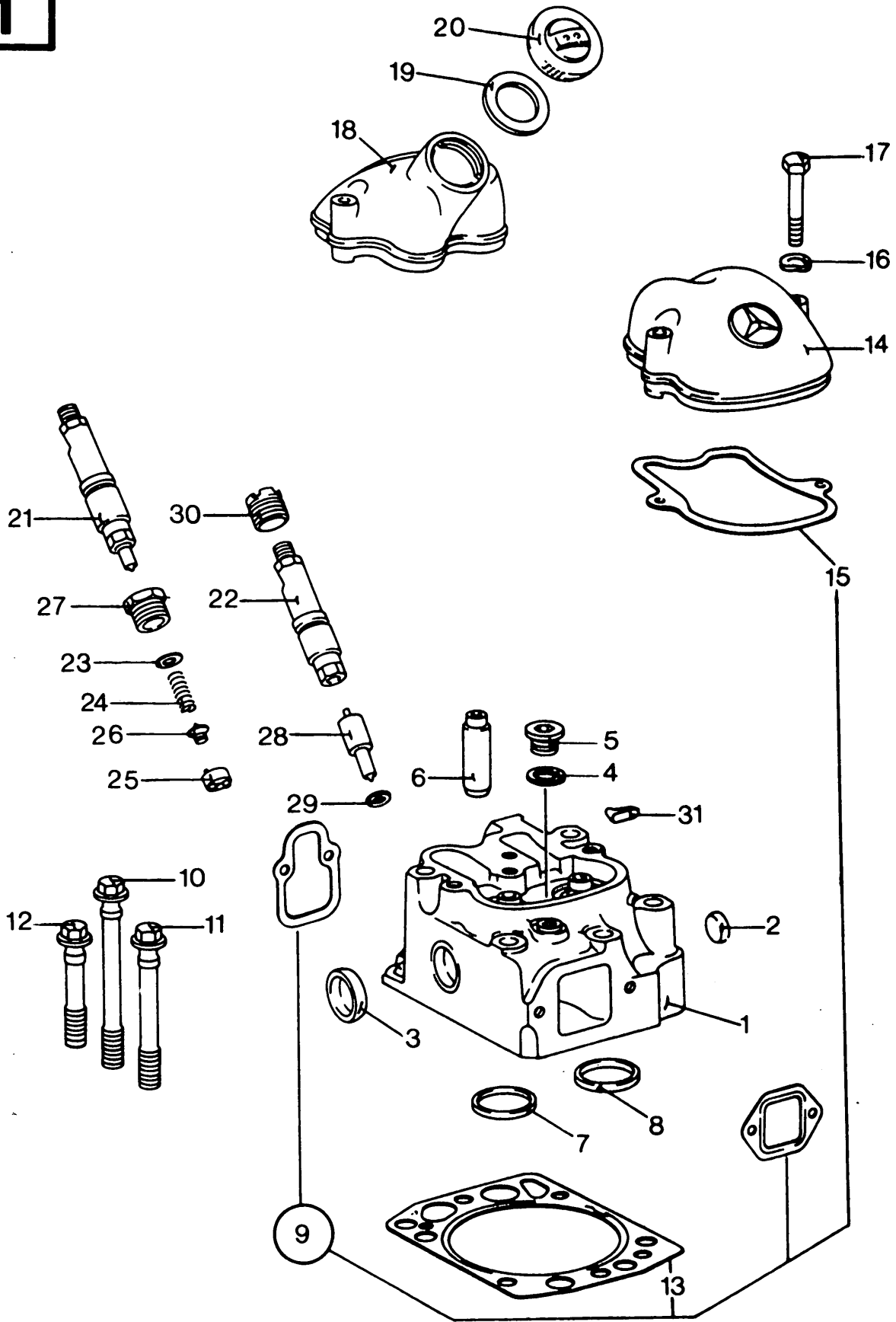


CYLINDER HEAD AND VALVE COVER  
 CULASSE ET COUVERCLE DE CULASSE  
 ZYLINDERKOPF UND VENTILDECKEL  
 TESTA E COPERCHI VALVOLE  
 CILINDERKOP EN KLEPPENDEKSEL

Fig.	Mercedes Part No.	Qty.		Code	Description	N.B.
		421	421A			
1	403 010 40 20	6			Cylinder head assembly	Including valves
	403 010 89 20		6		Cylinder head assembly	Including valves
2	403 997 07 20	6	6		Plug	
3	326 997 10 20	6	6		Plug	
4	007603 022103	6	6		Seal ring	
5	000908 022001	6	6		Screw plug	
6	403 053 00 30	12	12		Valve guide	Normal Ø 18 mm
	403 053 02 30	12	12		Valve guide	Repair size I Ø 18,4 mm
7	403 053 09 31	6	6		Valve seat inlet	Normal Ø 0,11 mm
	403 053 10 31	6	6		Valve seat inlet	Normal I Ø 0,31 mm
	403 053 11 31	6	6		Valve seat inlet	Repair size I Ø 60,51 mm
8	403 053 00 32	6	6		Valve seat exhaust	Normal Ø 53,11 mm
	403 053 01 32	6	6		Valve seat exhaust	Normal I Ø 53,31 mm
	403 051 02 31	6	6		Valve seat exhaust	Repair size I Ø 53,51 mm
9	423 010 03 80	6	6		Gasket kit	Incl. figs. 13 and 15
10	403 990 07 01	12	12		Screw	
11	403 990 06 01	18	18		Screw	
12	403 990 05 01	6	6		Screw	
13	422 016 00 20	6	6		Cylinder head gasket	
14	403 016 05 05	5	5		Cylinder head cover	
15	403 016 03 21	6	6		Gasket	
16	000931 008204	12	12		Lockwasher	
17	000931 008254	12	12		Hex. cap screw	
18	403 016 08 05	1	1		Cylinder head cover	
19	000 018 01 80	1	1		Seal ring	
20	000 018 07 02	1	1		Cover	
21	002 017 00 21	6			Nozzle holder with nozzle assembly	Bosch DLLA. 1145.820
	001 017 81 21		6		Nozzle holder with nozzle assembly	Bosch DLLA. 1445.829
22	NSS	6	6		Nozzle holder	
23	000 017 36 52	AR	AR		Shim washer	1,00 mm
	000 017 37 52	AR	AR		Shim washer	1,05 mm
	000 017 38 52	AR	AR		Shim washer	1,10 mm
	000 017 39 52	AR	AR		Shim washer	1,15 mm
	000 017 40 52	AR	AR		Shim washer	1,20 mm
	000 017 41 52	AR	AR		Shim washer	1,25 mm
	000 017 42 52	AR	AR		Shim washer	2,30 mm
	000 017 43 52	AR	AR		Shim washer	2,35 mm
	000 017 44 52	AR	AR		Shim washer	2,40 mm
	000 017 45 52	AR	AR		Shim washer	2,45 mm
	000 017 46 52	AR	AR		Shim washer	2,50 mm
000 017 47 52	AR	AR		Shim washer	2,55 mm	

GROUP

1

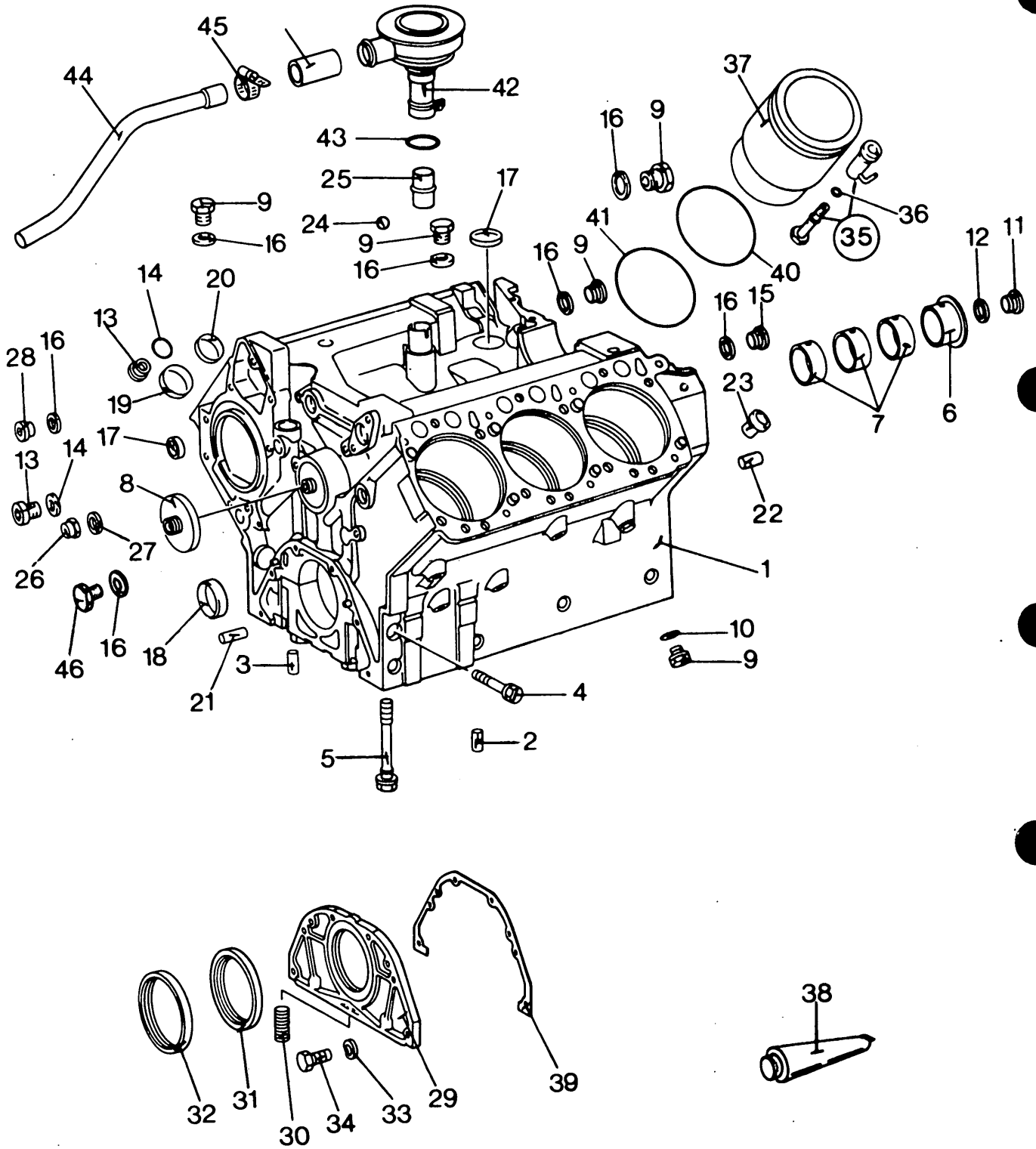


CYLINDER HEAD AND VALVE COVER  
 CULASSE ET COUVERCLE DE CULASSE  
 ZYLINDERKOPF UND VENTILDECKEL  
 TESTA E COPERCHI VALVOLE  
 CILINDERKOP EN KLEPPENDEKSEL

Fig.	Mercedes Part No.	Qty.		Code	Description	N.B.
		421	421A			
23	000 017 48 52	AR	AR		Shim washer	2,60 mm
	000 017 49 52	AR	AR		Shim washer	2,65 mm
	000 017 50 52	AR	AR		Shim washer	2,70 mm
	000 017 51 52	AR	AR		Shim washer	2,75 mm
	000 017 52 52	AR	AR		Shim washer	2,80 mm
	000 017 53 52	AR	AR		Shim washer	2,85 mm
	000 017 54 53	AR	AR		Shim washer	2,90 mm
	000 017 55 52	AR	AR		Shim washer	2,95 mm
24	000 017 05 17	6	6		Spring	
25	000 017 89 52	6	6		Shim washer	
26	000 017 11 74	6	6		Thrust pin	
27	000 017 22 16	6	6		Nut	
28	001 017 31 12	6			Nozzle	Bosch
	001 017 16 12		6		Nozzle	Bosch
29	346 017 01 60	AR	AR		Seal ring	1,00 mm
	346 017 02 60	AR	AR		Seal ring	1,50 mm
30	403 017 02 71	6	6		Screw	
31	403 016 00 61	6	6		Plug	

GROUP

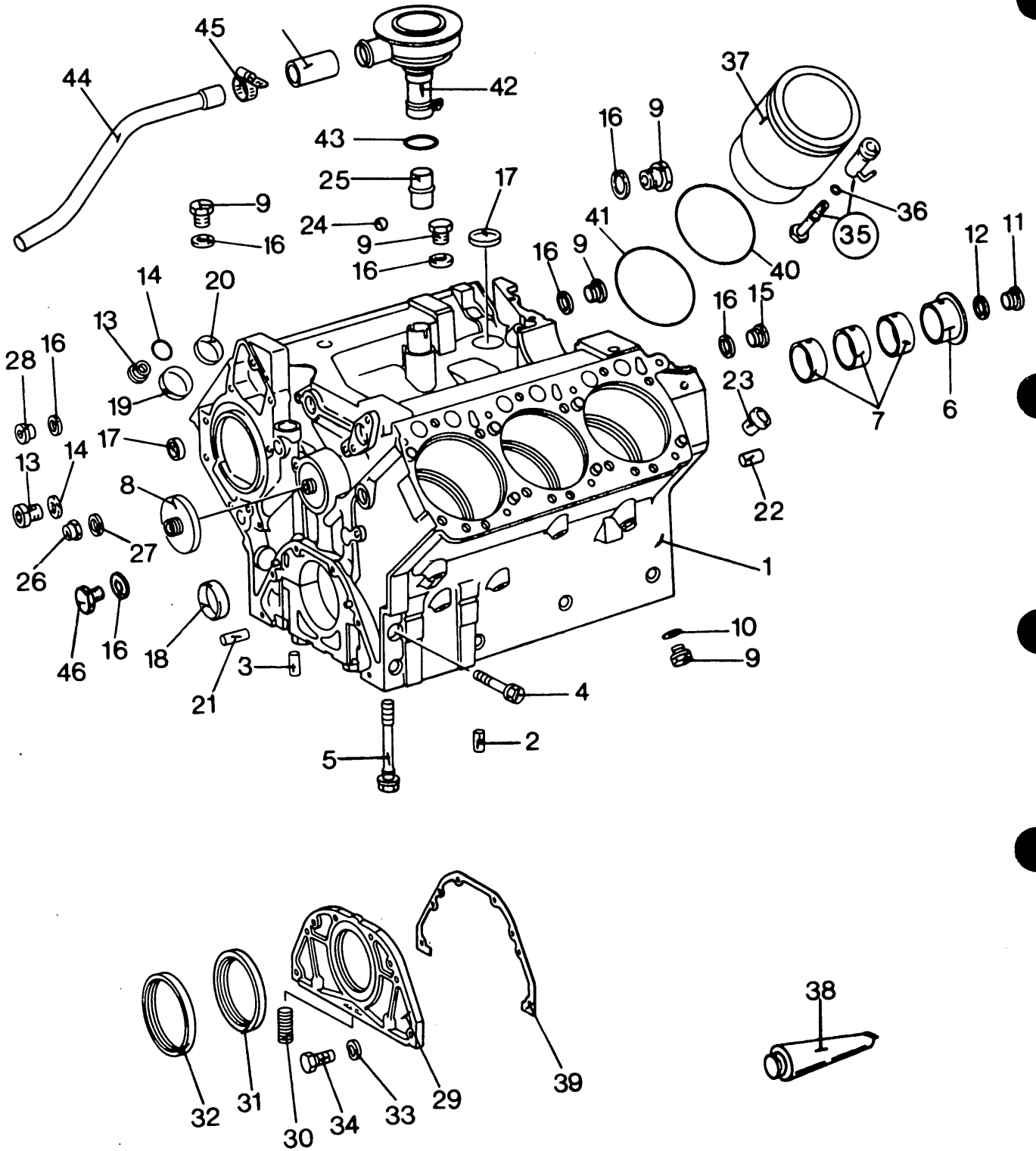
1



CYLINDER BLOCK  
 BLOC — CYLINDRES  
 ZYLINDERBLOCK  
 MONOBLOCCO  
 CILINDERBLOK

Fig.	Mercedes Part No.	Qty.		Code	Description	N.B.
		421	421A			
1	421 010 00 08	1	1		Cylinder block	
2	403 991 01 62	2	2		Bearing cap pin	
3	000007 008223	6	6		Bearing cap pin	
4	000960 012335	8	8		Hex. cap screw	
5	403 011 02 71	8	8		Hex. cap screw	
6	403 051 17 10	1	1		Camshaft bearing	Ø 70 mm Std.
7	403 051 09 10	3	3		Camshaft bearing	Ø 70 mm Std.
8	403 011 02 21	1	1		Cover	
9	007604 014106	6	6		Screw plug	
10	007603 014102	1	1		Seal ring	
11	915048 018000	1	1		Screw plug	
12	007603 018101	1	1		Seal ring	
13	000 997 35 32	3	3		Screw plug	
14	007603 026105	3	3		Seal ring	
15	000908 030002	3	3		Screw plug	
16	007603 030103	8	7		Seal ring	
17	403 997 04 20	AR	AR		Plug	Ø 34,2 mm
18	403 997 09 20	AR	AR		Cover	Ø 36,2 mm
19	326 997 10 20	AR	AR		Cover	Ø 40,3 mm
20	403 997 04 20	AR	AR		Cover	Ø 34,2 mm
	403 997 09 20	AR	AR		Cover	Ø 36,2 mm
21	000007 008226	2	2		Distribution cover pin	
22	000007 016215	2	2		Distribution cover pin	
23	107 991 00 41	12	12		Pin	
24	005401 999012	1	1		Ball	
25	403 011 01 24	1	1		Tube	
26	007605 022002	1	1		Screw plug	
27	007603 022103	1	1		Seal ring	
28	000908 030002	1	1		Screw plug	
29	403 010 09 14	1	1		Front cover	
30	900421 008004	3	3		Stud	
31	006 997 16 47	1	1		Seal ring	
32	NS	1	1		Seal ring	
33	000137 008204	6	6		Lockwasher	
34	000933 008153	6	6		Hex. cap screw	
35	403 180 10 43	6			Oil nozzle	Incl. fig. 36
	403 180 14 43		6		Oil nozzle	Incl. fig. 36
36	006 997 26 45	6	6		Seal ring	
37	—	6	6		Liner	See group 3
38	001 989 29 20	AR	AR		Seal material (tube)	
39	403 011 00 80	1	1		Gasket	
40	007 997 70 48	12	12		Seal ring	
41	423 011 02 59	12	12		Seal ring	

GROUP  
**2**



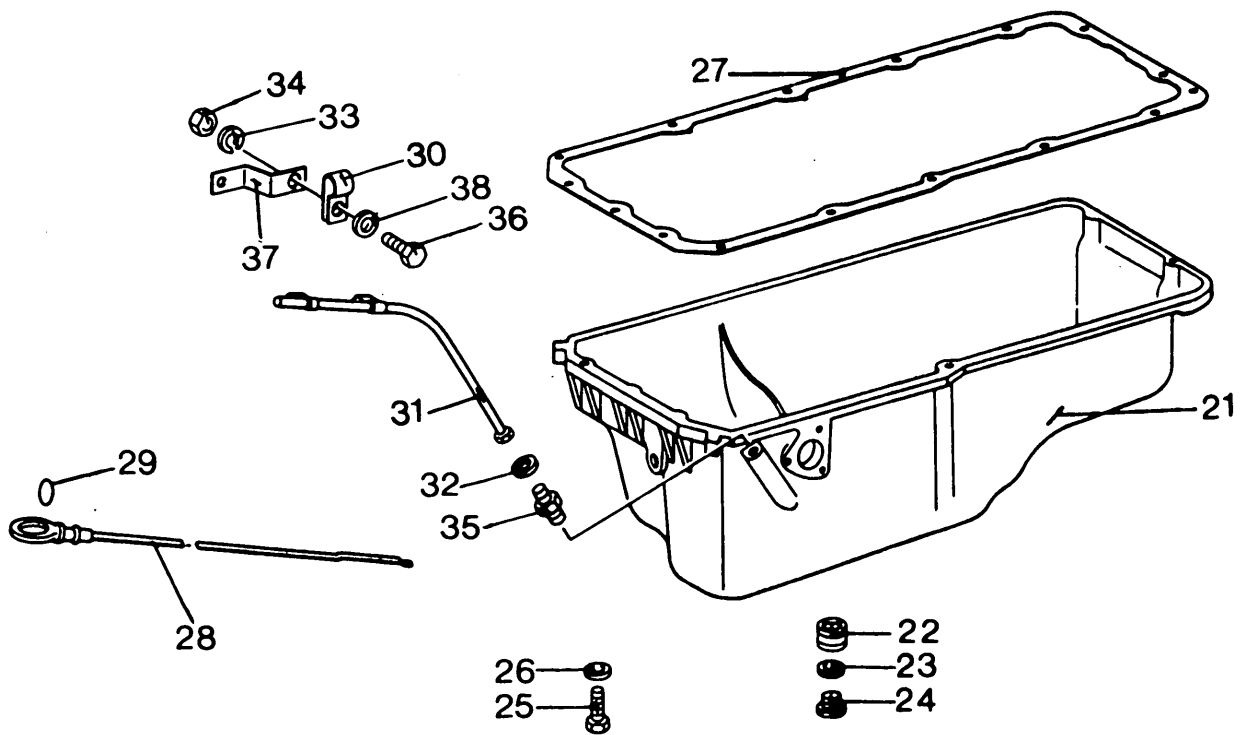
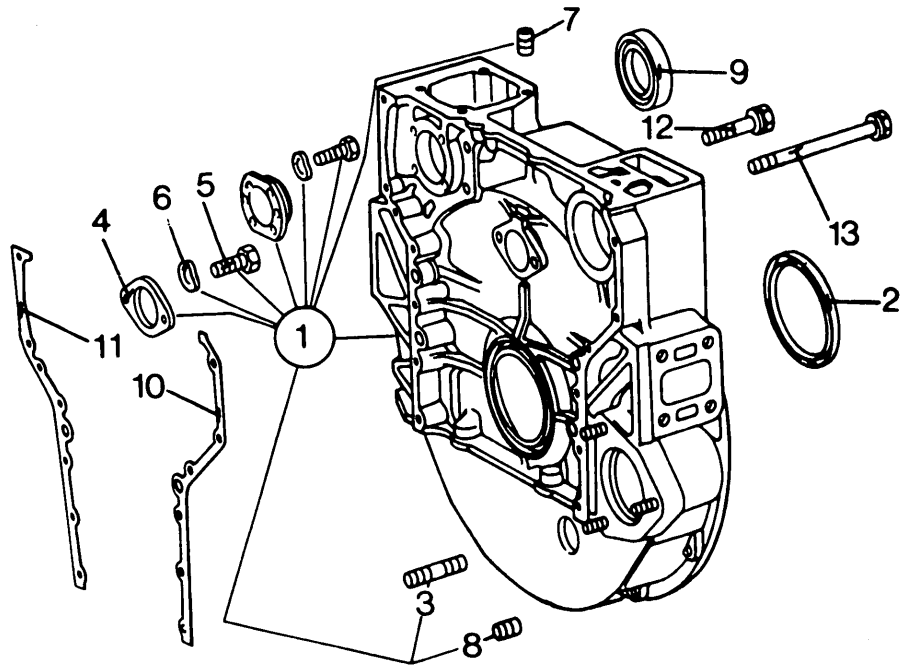
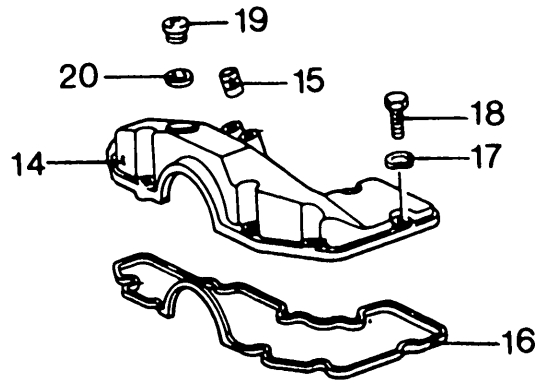
CYLINDER BLOCK  
 BLOC — CYLINDRES  
 ZYLINDERBLOCK  
 MONOBLOCCO  
 CILINDERBLOK

Fig.	Mercedes Part No.	Qty.		Code	Description	N.B.
		421	421A			
42	423 010 01 62	1			Oil separator	
	423 010 00 62		1		Oil separator	
43	000 997 53 48	1	1		Seal ring	
44	403 018 12 82	1			Pipe	
	352 018 18 82		1		Pipe	
45	916017 025000	1	1		Strap	
46	007604 010102	1			Threaded plug	

GROUP

**2**



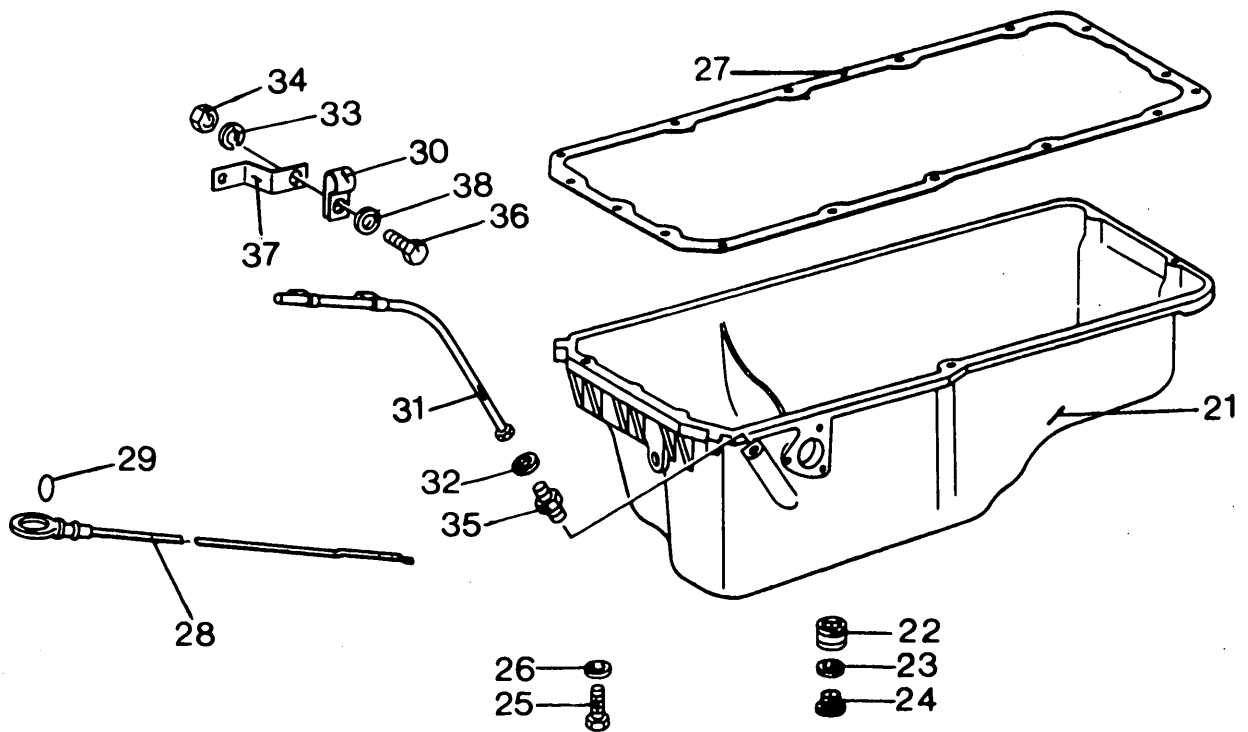
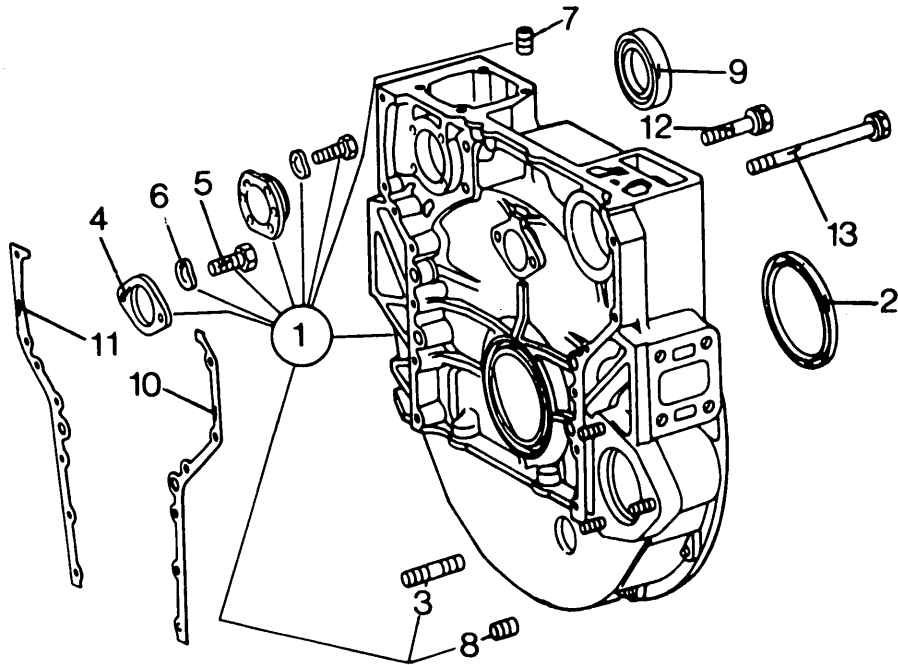
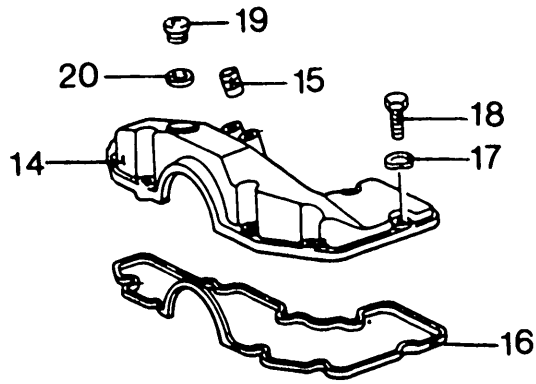


OIL SUMP AND TIMING HOUSING  
 CARTER ET COUVERCLE DE DISTRIBUTION  
 ÖLWANNE UND STEUERUNGSGEHÄUSE  
 COPPA OLIO E COPERCHI  
 OLIEPAN EN DISTRIBUTIEDEKSEL

Fig.	Mercedes Part No.	Qty.		Code	Description	N.B.
		421	421A			
1	403 010 46 33	1			Timing housing assy.	Incl. figs. 3,4,5,6,7 and 8
	403 010 82 33		1		Timing housing assy.	Incl. figs. 3,4,5,6,7 and 8
2	005 997 26 47	1	1		Seal ring	
3	000835 012028	3	3		Stud	
4	403 052 02 53	1	1		Flange	
5	000933 008130	2	2		Hex. cap screw	
6	000137 008204	2	2		Lockwasher	
7	900421 008004	15	15		Stud	
8	900 421 010002	15	15		Stud	
9	403 997 08 20	1	1		Cover	
10	403 015 07 80	1	1		Gasket	
11	403 015 06 80	1	1		Gasket	
12	403 990 03 04	10	10		Hex. cap screw	
13	403 990 04 04	2	2		Hex. cap screw	
14	423 010 01 17	1	1		Cover	
15	900421 012006	2	2		Stud	
16	403 015 01 60	1	1		Gasket	
17	000137 008204	8	8		Lockwasher	
18	000933 008152	8	8		Hex. cap screw	
19	007604 038200	1	1		Screw plug	
20	007603 038101	1	1		Seal ring	
21	401 010 11 13	1	1		Oil sump	
22	900421 026000	1	1		Stud	
23	007603 026305	1	1		Seal ring	
24	403 997 00 32	1	1		Screw plug	
25	000931 008049	10	10		Hex. cap screw	
	000931 008177	4	4		Hex. cap screw	
26	000125 008418	14	14		Washer	
27	401 014 01 22	1	1		gasket	
28	403 010 53 72		1		Dipstick	
	401 010 20 72	1			Dipstick	
29	003 997 82 45		1		Seal ring	
30	403 995 00 44		1		Clamp	
	403 995 01 44	1			Clamp	
31	403 010 58 66		1		Guiding tube	
	401 010 03 66	1			Guiding tube	
32	007603 014102	1	1		Seal ring	
33	912004 008102		1		Lockwasher	
34	000934 008010		1		Hex. nut	
	000934 006007	1	1		Hex. nut	
35	403 997 11 72	1	1		Nipple	
36	000933 008145		1		Hex. cap screw	
	000933 006102	1	2		Hex. cap screw	
	000933 016003		1		Hex. cap screw	

GROUP

3

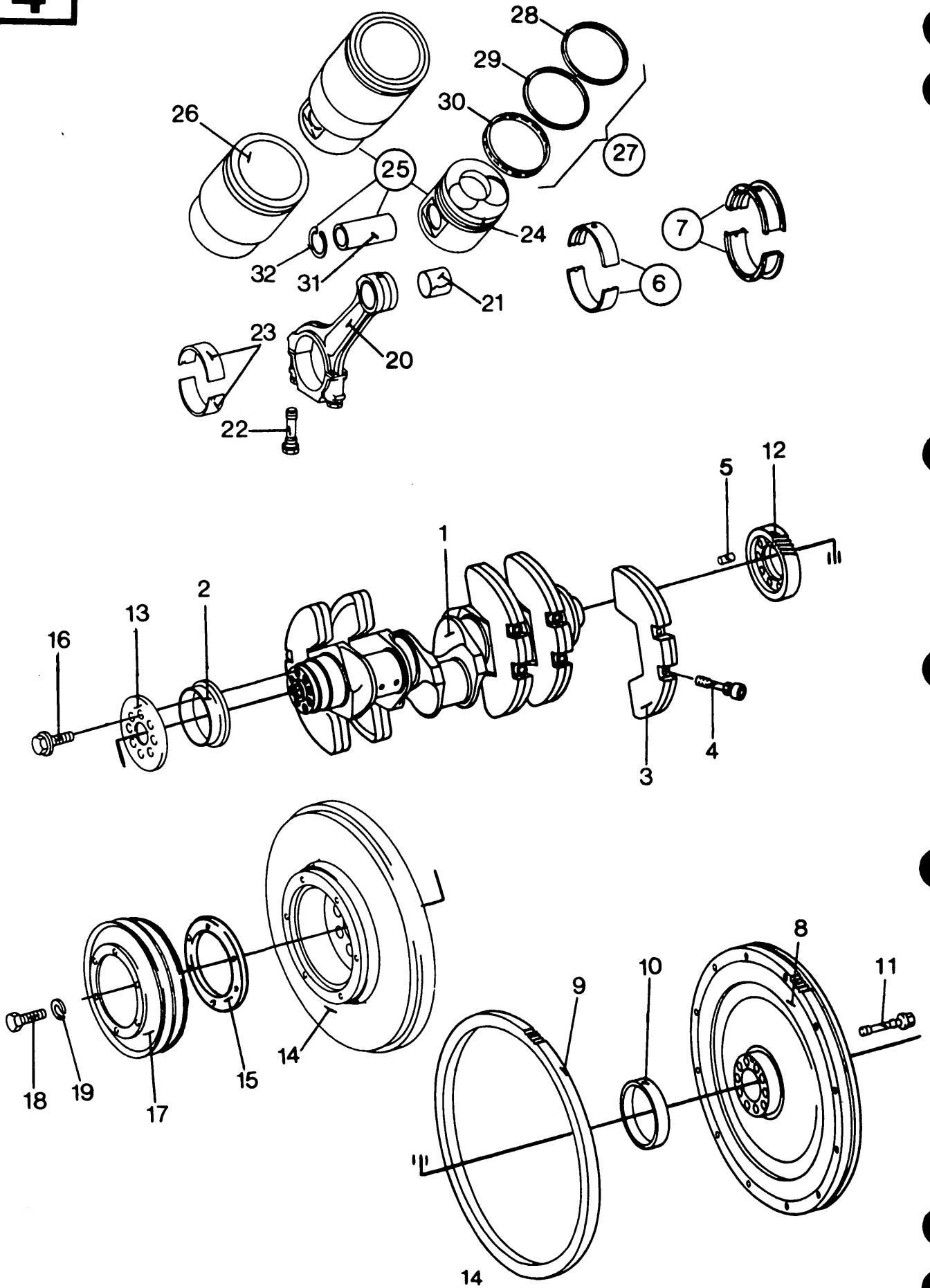


OIL SUMP AND TIMING HOUSING  
 CARTER ET COUVERCLE DE DISTRIBUTION  
 ÖLWANNE UND STEUERUNGSGEHÄUSE  
 COPPA OLIO E COPERCHI  
 OLIEPAN EN DISTRIBUTIEDEKSEL

Fig.	Mercedes Part No.	Qty.		Code	Description	N.B.
		421	421A			
37	401 018 14 00		1		Bracket	
	387 501 15 20	1			Bracket	
38	000137 016202		1		Lockwasher	
	912004 006102		1		Lockwasher	
	912004 006102	1			Lockwasher	

GROUP

**3**

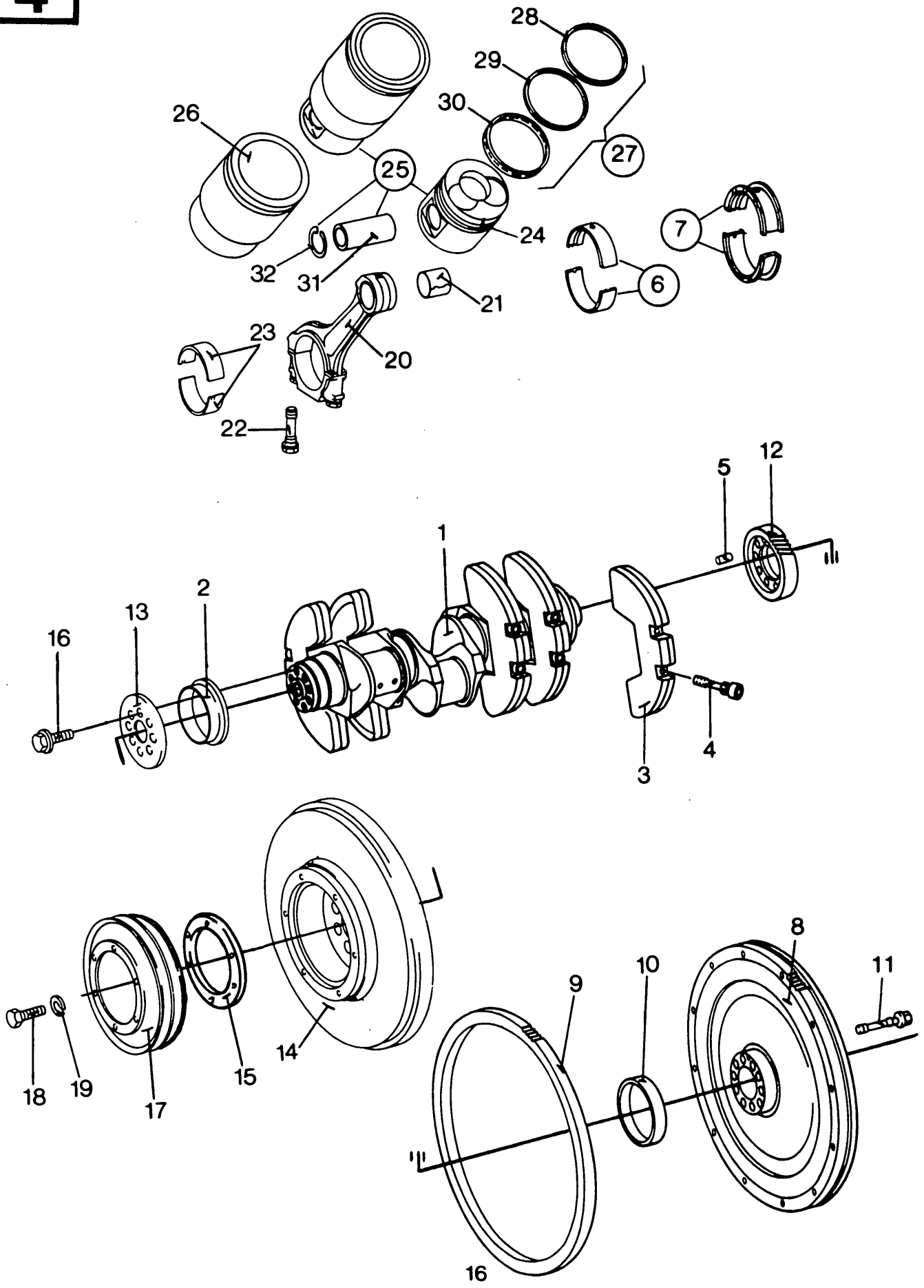


CRANKSHAFT, CONNECTING RODS AND PISTONS  
 VILBEBREQUIN, BIELLES ET PISTONS  
 KURBELWELLE, PLEUELSTANGEN UND KOLBEN  
 ALBERO MOTORE, BIELLE E PISTONI  
 KRUKAS, DRIJFSTANG EN ZUIGERS

Fig.	Mercedes Part No.	Qty.		Code	Description	N.B.
		421	421A			
1	421 030 11 01	1			Crankshaft with bearings	Incl. figs. 3,4,6,7 and 23
	421 030 10 01		1		Crankshaft with bearings	Incl. figs. 3,4,6,7 and 23. Up to eng. no. 003923
	421 030 17 01		1		Crankshaft with bearings	Incl. figs. 3,4,6,7 and 23. From engine no. 003924
2	403 031 07 27	1	1		Oil seal	
3	403 031 04 07	4	4		Counterweight	
4	403 031 01 71	8	8		Special screw	
5	000007 008231	1	1		Pin	
6	403 030 13 40	3	3		Set bearing shells	Ø 104,00 mm Std
	403 030 14 40	3	3		Set bearing shells	Ø 103,90 mm Std I
	403 030 15 40	3	3		Rep. set bearing shells	Ø 103,75 mm I
	403 03 16 40	3	3		Rep. set bearing shells	Ø 103,50 mm II
	403 030 17 40	3	3		Rep. set bearing shells	Ø 103,00 mm III
7	403 030 18 45	1	1		Set bearing shells	Ø 104,00 x 37,81 mm Std
	403 030 19 45	1	1		Set bearing shells	Ø 103,90 x 37,81 mm Std I
	403 030 20 45	1	1		Rep. set bearing shells	Ø 103,75 x 38,31 mm I
	403 030 21 45	1	1		Rep. set bearing shells	Ø 103,50 x 38,31 mm II
	403 030 22 45	1	1		Rep. set bearing shells	Ø 103,00 x 38,81 mm III
8	401 030 11 05	1	1		Fly wheel assembly	Incl. fig 9
9	403 032 03 05	1	1		Ring gear	
10	403 032 03 09	1	1		Spacer	
11	403 032 01 71	10	10		Hex. cap screw	
12	403 050 03 03	1	1		Gear	
13	403 031 03 32	1	1		Cover plate	
14	403 035 14 00	1			Damper	
	422 030 01 03		1		Damper	
15	403 035 01 14	1	1		Ring	
16	403 990 02 04	8	8		Hex. cap screw	
17	407 035 01 12	1	1		Pulley	
18	000933 008153	6	6		Hex. cap screw	
19	000137 008204	6	6		Lockwasher	
20	403 030 17 20	6	6		Connecting rod	
21	403 038 04 50	6	6		Bearing	
22	403 038 02 71	12	12		Hex. cap screw	
23	403 038 24 10	12	12		Set bearing shells	Ø 90,00 mm Std
	403 038 25 10	12	12		Set bearing shells	Ø 89,90 mm Std I
	403 038 26 10	12	12		Rep. set bearing shells	Ø 89,75 mm I
	403 038 27 10	12	12		Rep. set bearing shells	Ø 89,50 mm II
	403 038 28 10	12	12		Rep. set bearing shells	Ø 89,00 mm III
24	423 030 00 37	6			Piston	Up to eng. no. 007892
	423 030 18 17	6			Piston	Repair size C. Ø 127,995 mm From engine no. 007893

GROUP

4



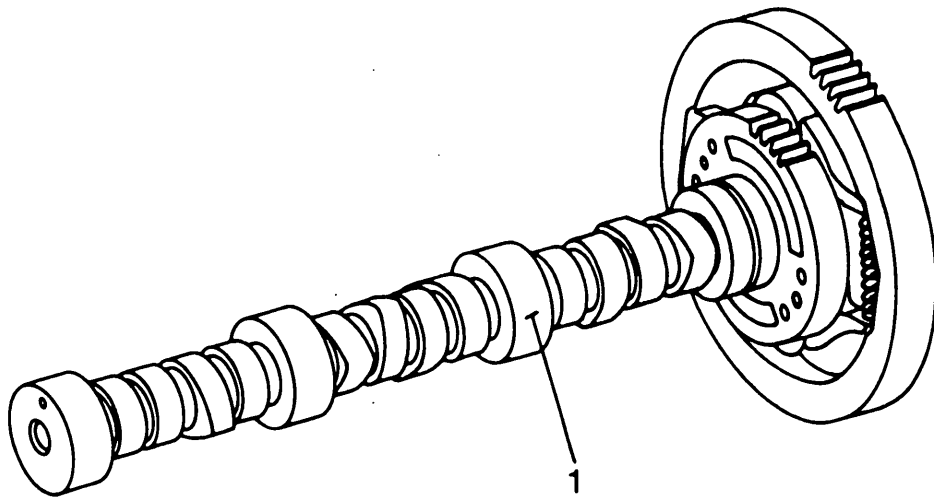
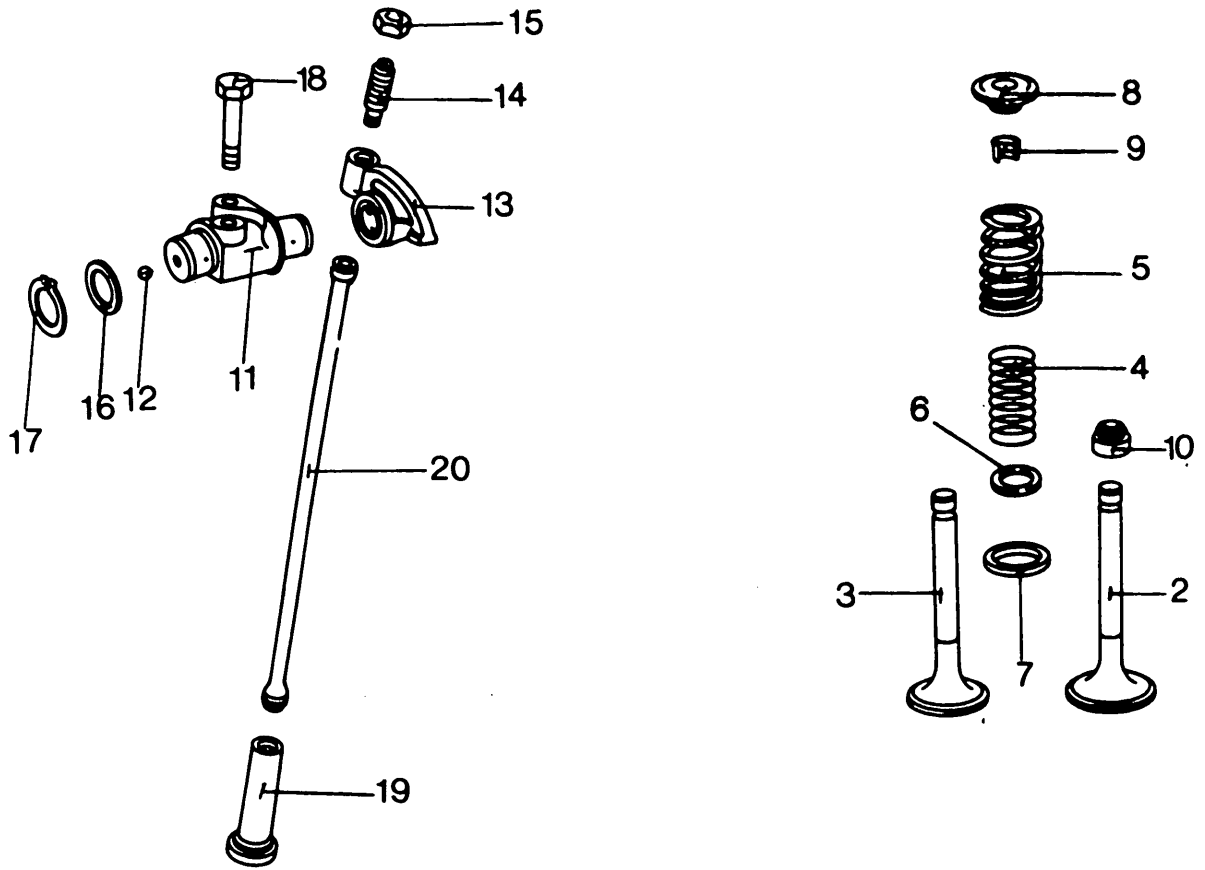
CRANKSHAFT, CONNECTING RODS AND PISTONS  
 VILBEBREQUIN, BIELLES ET PISTONS  
 KURBELWELLE, PLEUELSTANGEN UND KOLBEN  
 ALBERO MOTORE, BIELLE E PISTONI  
 KRUKAS, DRIJFSTANG EN ZUIGERS

Fig.	Mercedes Part No.	Qty.		Code	Description	N.B.
		421	421A			
24	423 030 11 17		6		Piston	Repair size C. Ø 127,995 mm Up to engine no. 030533
	423 030 15 17		6		Piston	Repair size C. Ø 127,995 mm From engine no. 030534
25	423 030 01 37		6		Piston and liner assy.	Repair size C - C up to eng. no.003923. Incl. figs. 24,31 and 32
	423 030 02 37		6		Piston and liner assy.	Repair size C - C From eng. no. 003924 Up to eng. no. 030533 Incl. figs. 24,31 and 32
	423 030 06 37		6		Piston and liner assy.	Repair size C - C From eng. no. 030534 Incl. figs. 24,31 and 32
	423 030 05 37	6			Piston and liner assy.	Repair size C - C From eng. no. 007893 Incl. figs. 24,31 and 32
26	423 011 02 10	6	6		Liner	Repair size C. Ø 127,995 mm
27	423 030 00 24	6			Ring kit	Std
	423 030 01 24		6		Ring kit	Std
28	423 037 00 16	6			Piston ring no. 1	Repair size Ø 128 mm
	423 037 02 16		6		Piston ring no. 1	Repair size Ø 128 mm
29	423 037 00 17	6			piston ring no. 2	Repair size Ø 128 mm
	423 037 01 17		6		Piston ring no. 2	Repair size Ø 128 mm
30	423 037 01 18	6	6		Piston ring no. 3	Repair size Ø 128 mm
31	423 037 00 20	6			Piston pin	Up to eng. no. 007892
	423 037 07 20	6			Piston pin	From eng. no. 007893
	423 037 01 20		6		Piston pin	Up to eng. no. 003923
	423 037 05 20		6		Piston pin	From eng. no. 003924
	423 037 06 20		6		Piston pin	Up to eng. no. 030533
32	403 994 00 34	12	12		Circlip	From eng. no. 030534

GROUP

4



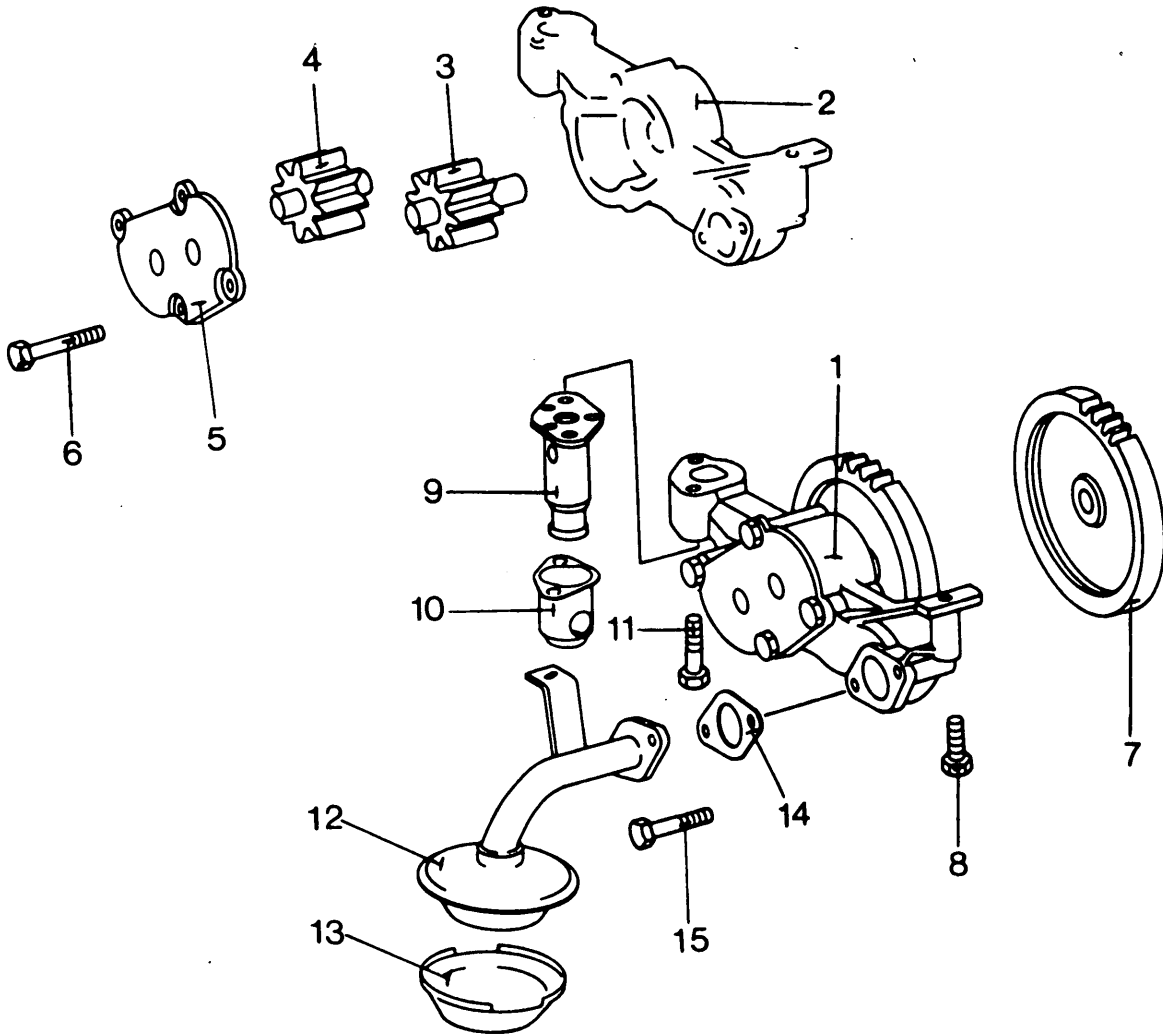


CAMSHAFT, ROCKER SHAFT & VALVES  
 ARBRE A CAMES, CULBULTEURS ET SOUPAPES  
 EXENTERWELLE, STÖSSER UND VENTILE  
 ALBERO ECCENTRICO, PUNTERIE E VALVOLE  
 NOKKENAS, STANGEN EN KLEPPEN

Fig.	Mercedes Part No.	Qty.		Code	Description	N.B.
		421	421A			
1	421 050 05 01	1			Camshaft assembly	
	421 050 04 01		1		Camshaft assembly	
2	423 050 00 26	6	6		Inlet valve	
3	423 050 04 27		6		Exhaust valve	
	423 050 03 27		6		Exhaust valve	
4	403 053 11 22	12	6		Inner valve spring	
	403 053 10 22		6		Inner exhaust valve spring	Reinforced
5	403 053 01 20	12	6		Outer valve spring	
	403 053 07 20		6		Outer exhaust valve spring	Reinforced
6	403 053 00 52	12	12		Inner shim washer	
7	403 053 01 52	12	12		Outer shim washer	
8	403 053 03 25	12	12		Retainer	
9	000 053 07 26	24	24		Valve cone half	
10	403 053 00 96	12			Sleeve	
11	403 050 12 36	6	6		Rocker arm support	
12	005401 999012	12	12		Ball	
13	403 050 07 33	12	12		Rocker	
14	403 055 02 20	12	12		Set screw	
15	312 990 02 51	12	12		Nut	
16	001 990 82 40	12	12		Washer	
17	000471 024000	12	12		Circlip	
18	000931 010369	12	12		Hex. cap screw	
19	403 054 18 01	12			Valve tappet	
	403 050 03 25		12		Valve tappet	
20	403 054 04 05	12	12		Push rod	

GROUP

5

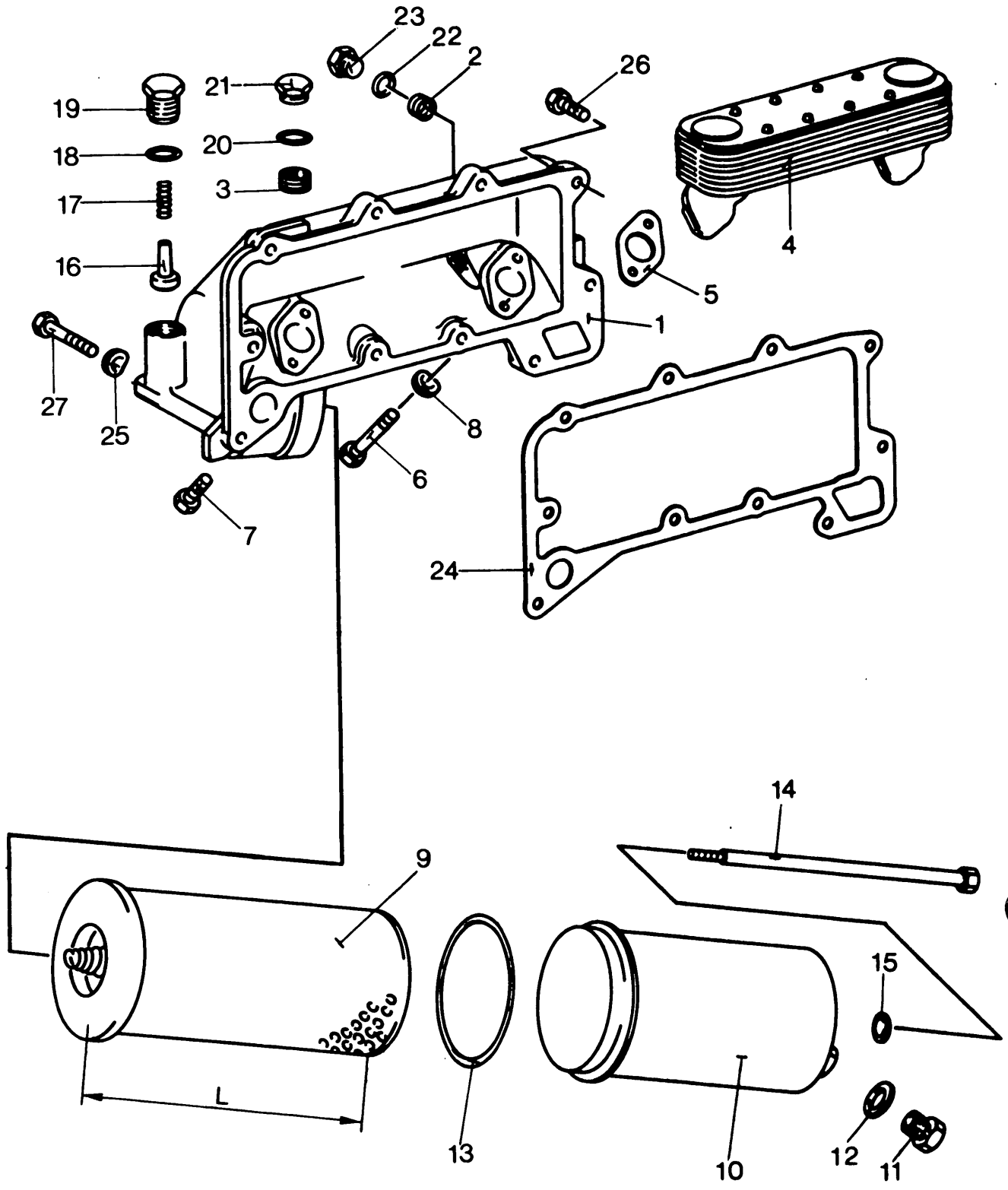


OIL PUMP  
 POMPE A HUILE  
 ÖLPUMPE  
 POMPA OLIO  
 OLIEPOMP

Fig.	Mercedes Part No.	Qty.		Code	Description	N.B.
		421	421A			
1	401 180 02 01	1			Oil pump assembly	Incl. all figs.
	403 180 17 01		1		Oil pump assembly	Incl. all figs.
2	NSS	1	1		Pump housing	
3	401 180 08 04	1			Gear	
	403 180 14 04		1		Gear	
4	401 180 09 04	1			Gear	
	403 180 06 04		1		Gear	
5	403 181 02 20	1	1		Cover	
6	000931 008314	4	4		Hex. cap screw	
7	403 181 01 12	1	1		Gear	
8	000933 008245	1	1		Hex. cap screw	
9	403 180 16 15	1	1		Valve	
10	NSS	1	1		Cap	
11	000912 008031	2	2		Hex. cap screw	
12	401 180 09 52	1	1		Oil suction pipe	
13	403 186 01 04	1	1		Sieve	
14	917003 036002	1	1		Gasket	
15	914126 008049	2	2		Hex. cap screw	

GROUP

6

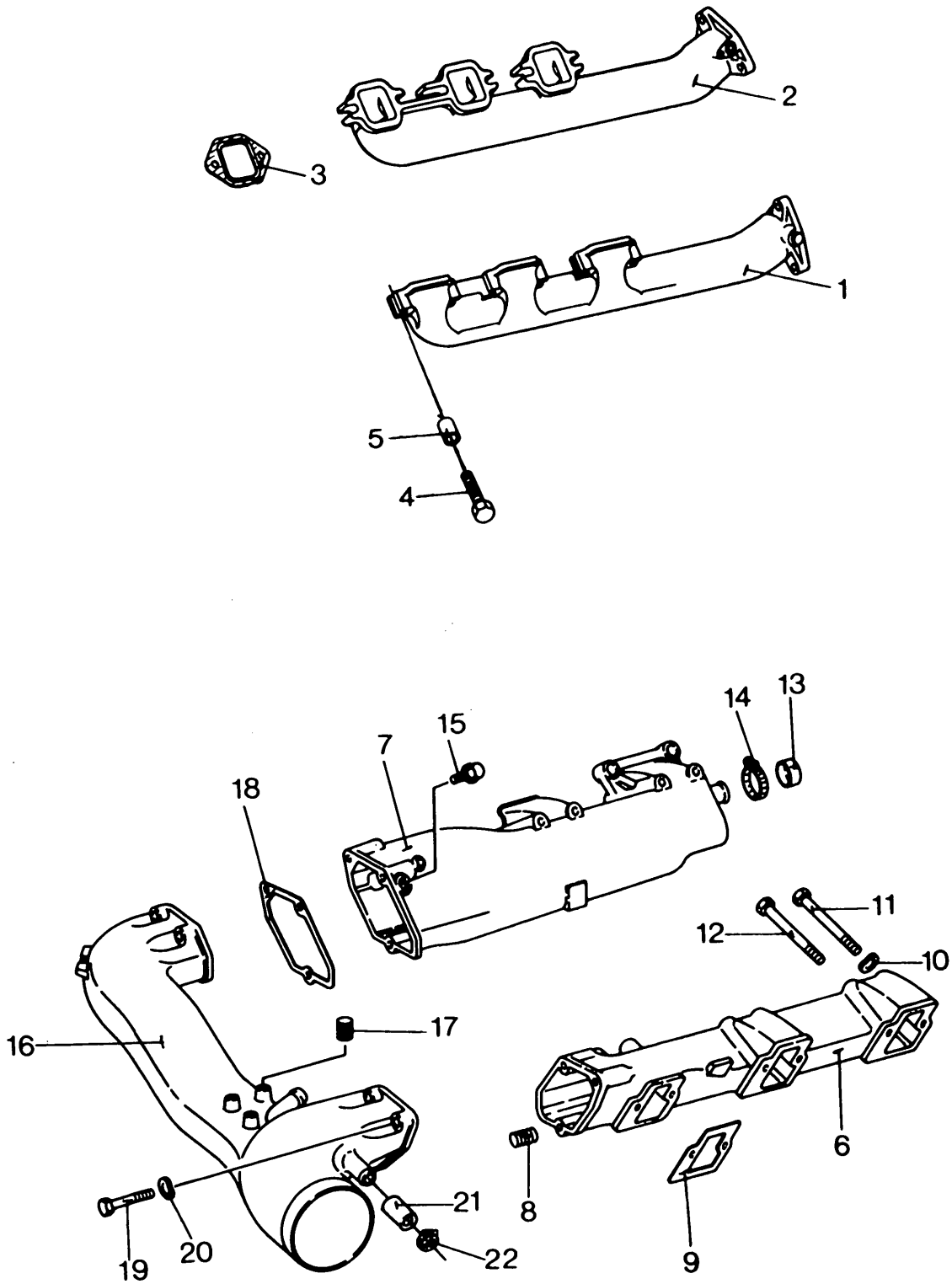


OIL COOLER AND OIL FILTER  
 ECHANGEUR DE TEMPERATURE ET FILTRE A HUILE  
 WÄRMETAUSCHER UND ÖLFILTER  
 SCAMBIATORE DI CALORE E FILTRO OLIO  
 OLIEKOELER EN OLIEFILTER

Fig.	Mercedes Part No.	Qty.		Code	Description	N.B.
		421	421A			
1	403 180 24 38	1	1		Cover	
2	900195 014205	1	1		Screw plug	
3	900421 026000	1	1		Screw plug	
4	001 188 31 01	1	1		Oil cooler assembly	
5	917003 026000	2	2		Gasket	
6	000933 008147	2	2		Hex. cap screw	
7	000931 008221	2	2		Hex. cap screw	
8	000137 008204	4	4		Lockwasher	
9	401 180 00 09	1	1		<b>Oil filter element kit</b>	<b>S.N.H. Order Ref. 419405 9</b> Short type: L = 165 mm
	402 180 00 09	1			<b>Oil filter element kit</b>	<b>S.N.H. Order Ref. 448389 8</b> Long type: L = 242 mm
10	401 180 00 11	1	1		Filter bowl	Short type
	403 180 00 11	1			Filter bowl	Long type
11	346 997 01 30	1	1		Screw plug	
12	007603 018101	1	1		Seal ring	
13	008 997 70 45	1	1		Seal ring	
14	401 990 00 01	1	1		Hex. cap screw	Short type
	403 990 09 01	1			Hex. cap screw	Long type
15	007603 014102	1	1		Seal ring	
16	403 184 01 32	1	1		Valve	
17	403 993 02 01	1	1		Spring	
18	007603 026105	1	1		Seal ring	
19	403 184 01 56	1	1		Screw plug	
20	007603 026400	1	1		Seal ring	
21	403 997 00 32	1	1		Screw plug	
22	007603 014102	1	1		Seal ring	
23	007604 014106	1	1		Screw plug	
24	403 184 02 80	1	1		Gasket	
25	000137 010201	10	10		Lockwasher	
26	000933 010145	9	9		Hex. cap screw	M10 x 35 mm
27	000931 010332	1	1		Hex. cap screw	M10 x 150 mm

GROUP

**7**



INLET & EXHAUST MANIFOLDS  
 COLLECTEURS D'ADMISSION ET D'ECHAPPEMENT  
 EINLAS- UND AUSPUFFSAMMELROHRE  
 COLLETORI DI ASPIRAZIONE E DI SCARICO  
 IN- EN UITLAAT SPRUITSTUKKEN

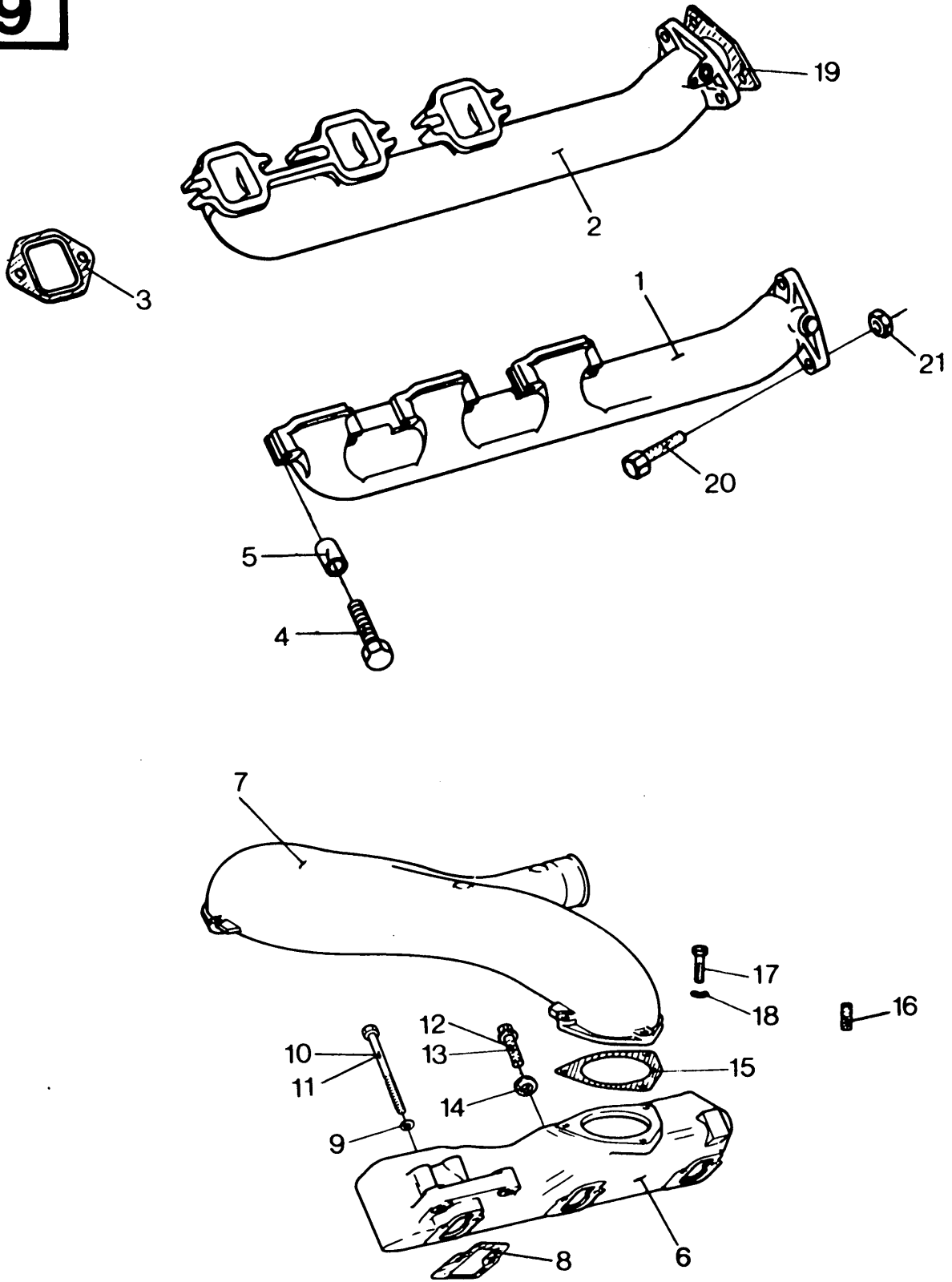
FOR OM 421 ONLY

Fig.	Mercedes Part No.	Qty.		Code	Description	N.B.
		421	421A			
1	401 142 29 01	1			Exhaust manifold	Left-hand
2	401 142 30 01	1			Exhaust manifold	Right-hand
3	403 142 03 80	6			Gasket	
4	403 990 00 19	12			Hex. cap screw	
5	403 142 02 12	12			Bushing	
6	401 140 00 01	1			Inlet manifold	Left-hand
7	401 140 01 01	1			Inlet manifold	Right-hand
8	900421 010002	6			Stud	
9	403 141 11 80	6			Gasket	
10	000137 008204	12			Lockwasher	
11	000931 008207	8			Hex. cap screw	M8 x 90 mm
12	000931 008220	4			Hex. cap screw	M8 x 110 mm
13	422 987 02 45	1			Cap	
14	916017 032000	1			Strap	
15	007604 010102	2			Threaded plug	
16	403 140 25 01	1			Inlet manifold	
17	900421 008002	3			Stud	
18	401 141 00 80	2			Gasket	
19	000931 010244	6			Hex. cap screw	
20	000137 010201	6			Lockwasher	
21	422 987 01 45	1			Cap	
22	916017 032000	1			Strap	

GROUP

8





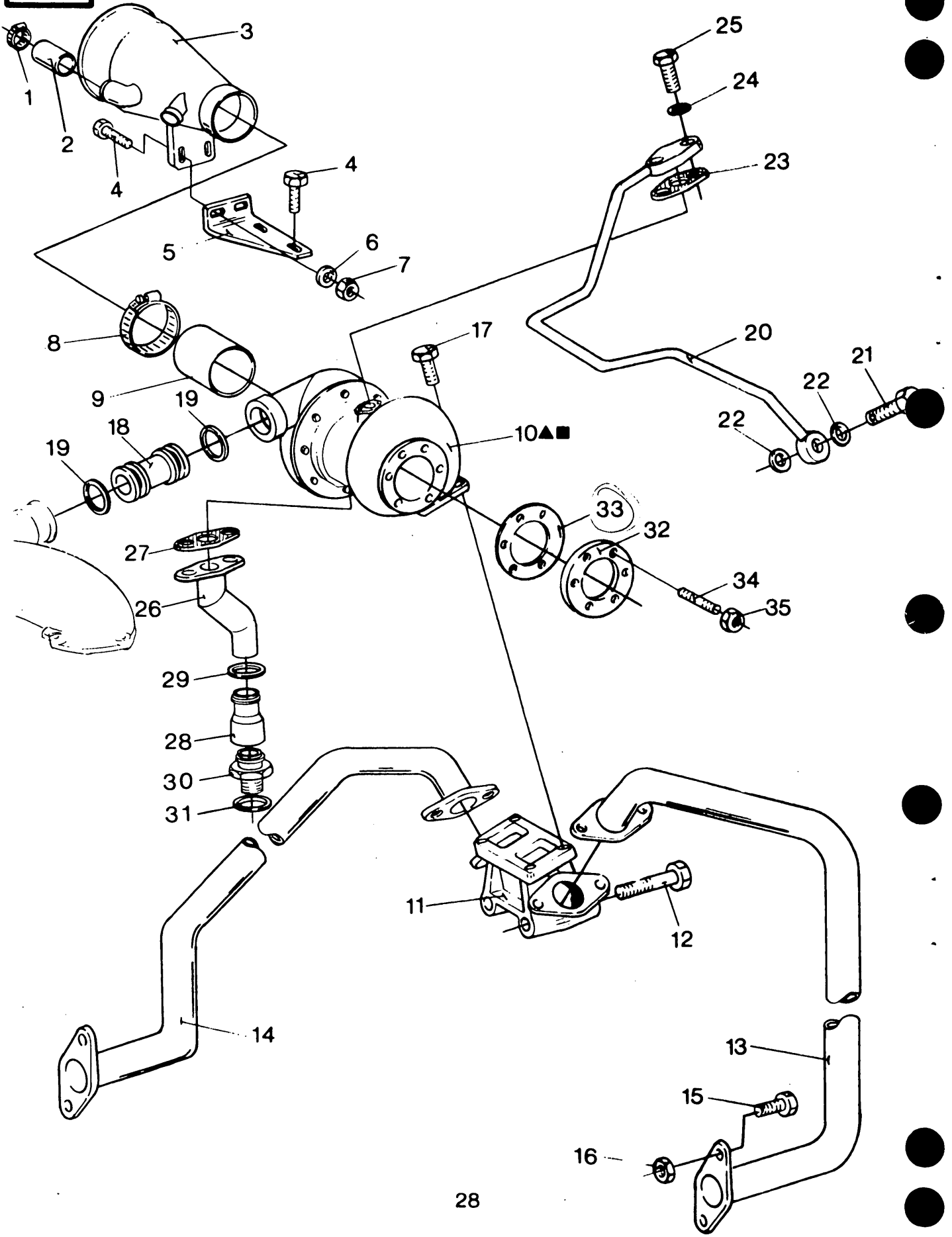
INLET & EXHAUST MANIFOLDS  
 COLLECTEURS D'ADMISSION ET D'ÉCHAPPEMENT  
 EINLAS- UND AUSPUFFSAMMELROHRE  
 COLLETORI DI ASPIRAZIONE E DI SCARICO  
 IN- EN UITLAAT SPRUITSTUKKEN

FOR OM 421A (Turbo) ONLY

Fig.	Mercedes Part No.	Qty.		Code	Description	N.B.
		421	421A			
1	421 142 03 01	1			Exhaust manifold	Left-hand
2	421 142 04 01	1			Exhaust manifold	Right-hand
3	403 142 03 80	6			Gasket	
4	403 990 00 19	12			Hex. cap screw	
5	403 142 02 12	12			Bushing	
6	401 140 12 01	2			Inlet manifold	
7	421 141 00 01	1			Inlet manifold	
8	403 141 11 80	6			Gasket	
9	000135 008204	12			Lockwasher	
10	000931 008207	4			Hex. cap screw	M8 x 90 mm
11	000931 008220	8			Hex. cap screw	M8 x 110 mm
12	007604 010102	1			Threaded plug	
13	007604 012102	2			Threaded plug	
14	007603 012110	2			Seal ring	
15	401 141 04 80	2			Gasket	
16	900421 008004	6			Stud	
17	000931 008248	6			Hex. cap screw	
18	000137 008204	6			Lockwasher	
19	302 490 00 80	2			Gasket	
20	000931 012132	6			Hex. cap screw	
21	000934 012010	6			Hex. nut	

GROUP

9



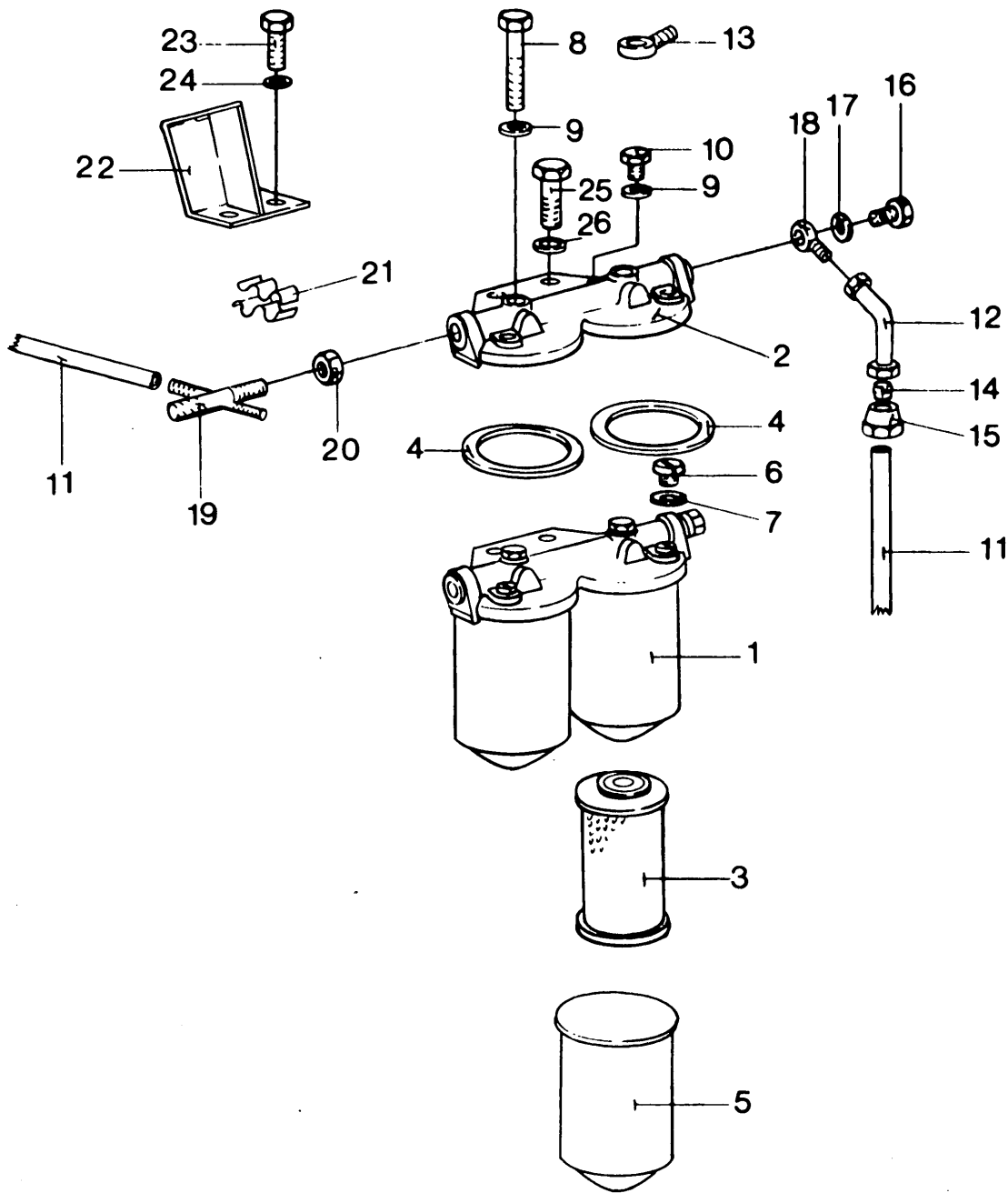
TURBO CHARGER  
 TURBOCOMPRESSEUR  
 TURBOLADER  
 TURBOCOMPRESSORE  
 TURBOCOMPRESSOR

FOR OM 421A (Turbo) ONLY

Fig.	Mercedes Part No.	Qty.		Code	Description	N.B.
		421	421A			
1	916017 025000		1		Strap	
2	404 987 51 45		1		Collar	
3	421 141 04 01		1		Air inlet tube	
4	000933 008153		4		Hex. cap screw	
5	421 131 00 21		1		Bracket	
6	000137 08204		2		Lockwasher	
7	000934 008010		2		Hex. nut	
8	916017 070000		1		Strap	
9	422 997 00 83		1		Tube	
10	002 096 04 99		1		Turbocharger assembly	
▲	000 586 26 09		1		Seal repair kit	
■	000 09 07 90		1		Overhaul kit	Incl. all turning parts
11	421 142 00 09		1		Exhaust collector	
12	000931 016046		2		Hex. cap screw	
13	421 140 00 03		1		Exhaust pipe	Left-hand
14	421 140 01 03		1		Exhaust pipe	Right-hand
15	421 990 00 19		4		Hex. cap screw	
16	999900 010000		4		Hex. nut	
17	000 990 87 12		8		Hex. cap screw	
18	421 098 01 16		1		Tube	
19	006 997 47 48		2		Seal ring	
20	421 180 00 20		1		Oil tube	
21	915036 010100		1		Hollow screw	
22	007603 014106		2		Seal ring	
23	617 187 01 80		1		Gasket	
24	000137 008204		4		Lockwasher	
25	914126 008017		4		Hex. cap screw	
26	421 187 00 24		1		Oil return elbow	
27	352 187 00 80		1		Gasket	
28	422 180 00 22		1		Oil pipe	
29	422 997 00 40		2		Seal ring	
30	422 997 02 72		1		Niple	
31	007603 026104		1		Seal ring	
32	421 142 00 15		1		Ring	
33	422 144 02 80		1		Gasket	
34	000 990 56 05		6		Stud	
35	99901 008004		6		Hex. nut	

GROUP

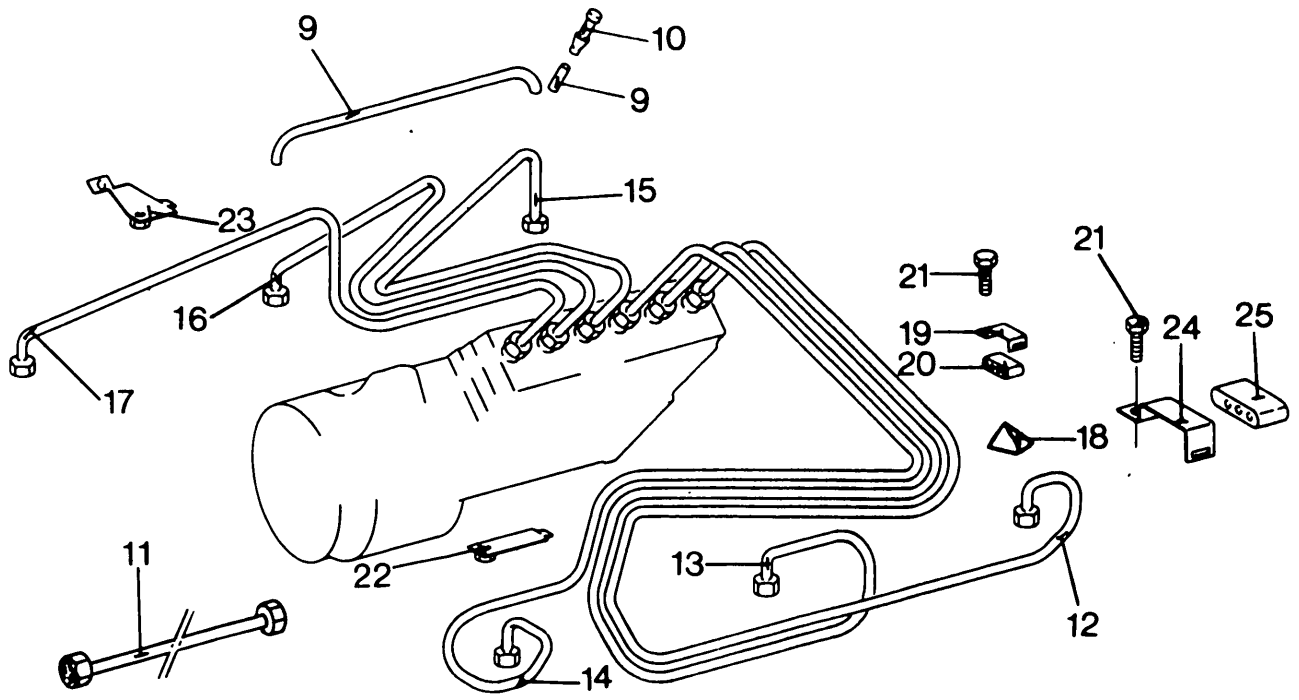
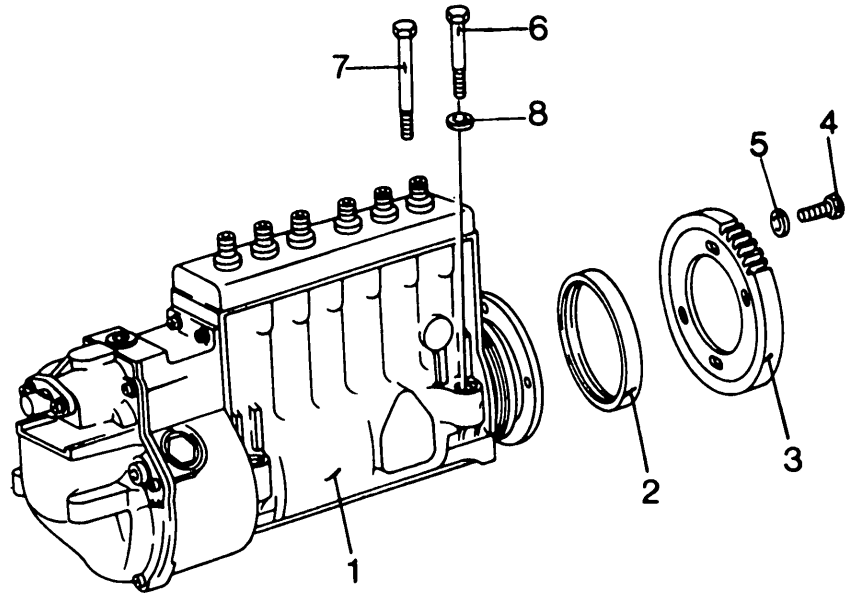
10



FUEL FILTER  
 FILTRE A COMBUSTIBLE  
 KRAFTSTOFFFILTER  
 FILTRO COMBUSTIBILE  
 BRANDSTOFFFILTER

Fig.	Mercedes Part No.	Qty.		Code	Description	N.B.
		421	421A			
1	422 090 01 52	1	1		Fuel filter assembly	
2	422 090 00 12	1	1		Cover	
3	422 090 00 51	2	2		Fuel filter element kit	S.N.H. Order Ref. 450666 0 Incl. fig. 4
4	000 447 31 80	2	2		Seal ring	
5	422 090 00 07	2	2		Housing	
6	000908 014001	2			Threaded plug	
7	007603 014104	2			Seal ring	
8	000931 00 8251	2	2		Hex. cap screw	
	403 070 51 71		1		Hex. cap screw	
9	007603 008109	3			Seal ring	
	007603 008103		2		Seal ring	
10	000 074 51 71	1			Screw plug	
11	008 997 54 82	2			Tube	Order by the meter
12	314 180 03 58	1			Elbow	
13	915052 008000	3			Banjo nipple	
14	001 997 49 72	2			Ferrule	
15	915017 010201	2			Jam nut	
16	915036 010100	3			Hollow screw	
17	007603 014104	7			Seal ring	
18	915009 008000	1			Banjo nipple	
19	403 070 00 95	1	1		Nipple	
20	080705 016003	1	1		Coupler nut	
21	000 995 12 65	1			Clamp	
22	421 090 00 40	1	①		Support	
23	000933 008147	3			Hex. cap screw	
24	000125 008418	3			Washer	
25	000961 012097	2			Hex. cap screw	
26	000137 012203	2			Lockwasher	

GROUP  
**11**



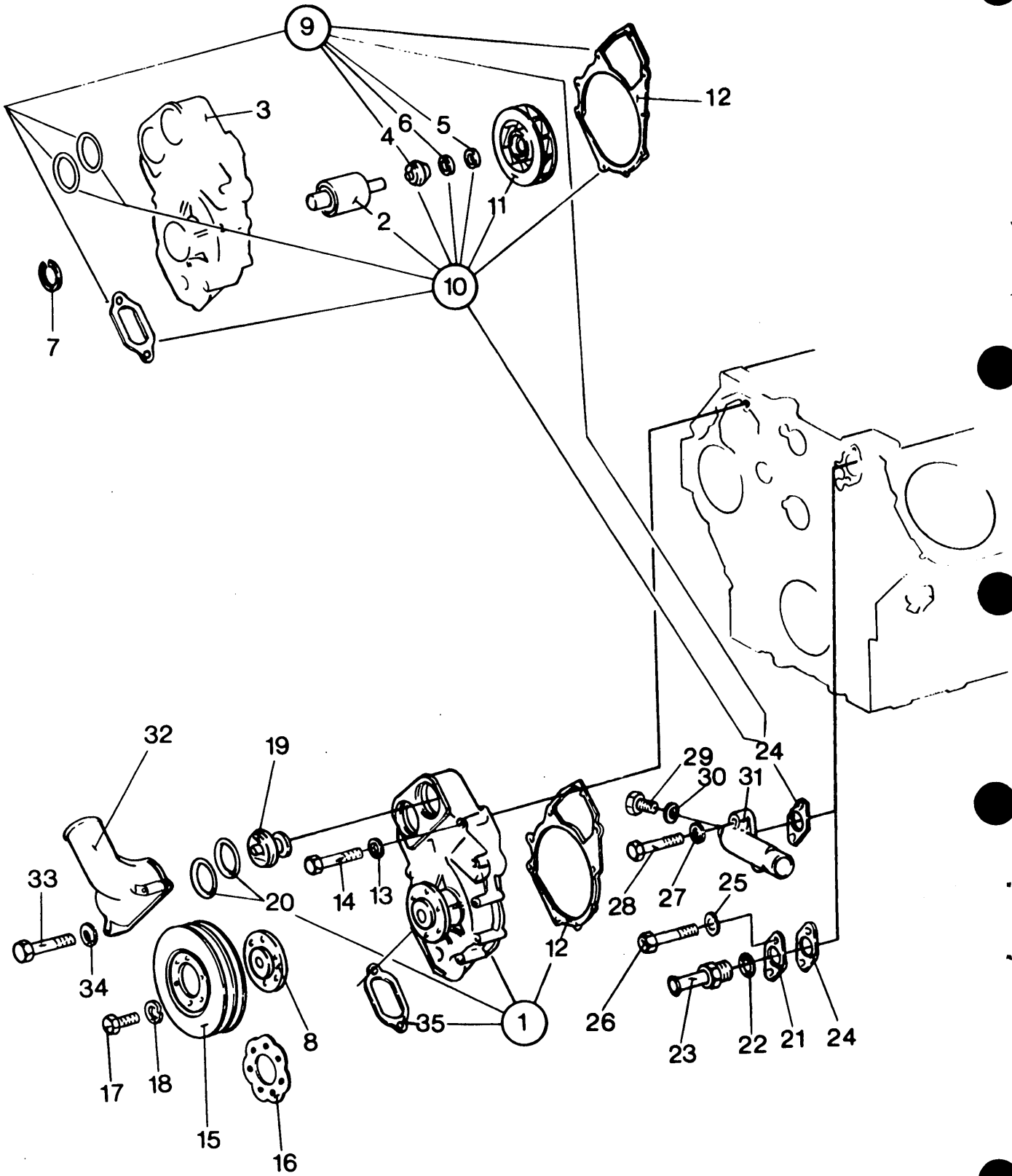
FUEL INJECTION PUMP ASSEMBLY AND FUEL LINES  
 POMPE D'INJECTION (COMPLETE) ET CANALISATIONS D'INJECTION  
 EINSPRITZPUMPE (KOMPLETT) UND EINSPRITZLEITUNGEN  
 POMPA INIEZIONE (COMPLETA) E TUBAZIONI INIETTORI  
 INJECTIEPOMP (KOMPLEET) EN INJECTIELEIDINGEN

Fig.	Mercedes Part No.	Qty.		Code	Description	N.B.
		421	421A			
1	007074 06 02	1			Injection pump assy.	Bosch PE-6P.110A.320.LS.3805 Up to eng. no. 061883
	010 074 95 02	1			Injection pump assy.	Bosch PE.6P.110A.320.LS.3805 From eng. no. 061884
	007 074 13 02		1		Injection pump assy.	Bosch PE.6P.120A.320.LS.3815
2	403 074 00 39	1	1		Seal ring	
3	403 077 05 12	1	1		Gear	
4	000933 008030	4	6		Hex. cap screw	
5	403 990 05 04	4	6		Washer	
6	000931 010369	3	3		Hex. cap screw	
7	000931 010147	1	1		Hex. cap screw	
8	006319 010302	4	4		Washer	
9	407 997 64 82	6	6		Tube	Order by the meter
10	403 070 03 55	2	2		Nipple	
11	403 070 76 33	6	6		Fuel line	Straight
12	403 070 76 33	1			Fuel line	Left-hand no. 1
	421 070 12 33		1		Fuel line	Left-hand no. 6
13	403 070 77 33	1			Fuel line	Left-hand no. 2
	421 070 11 33		1		Fuel line	Left-hand no. 5
14	403 070 78 33	1			Fuel line	Left-hand no. 3
	421 070 10 33		1		Fuel line	Left-hand no. 4
15	403 070 79 33	1			Fuel line	Right-hand no. 4
	421 070 15 33		1		Fuel line	Right-hand no. 3
16	403 070 80 33	1			Fuel line	Right-hand no. 5
	421 070 14 33		1		Fuel line	Right-hand no. 2
17	403 070 81 33	1			Fuel line	Right-hand no. 6
	421 070 13 33		1		Fuel line	Right-hand no. 1
18	403 070 13 66	1			Bracket	
19	314 995 00 42	2			Clamp	
20	422 078 01 86	2			Clamp	
21	000933 006103	AR			Hex. cap screw	
22	322 070 00 66	1			Bracket	
23	423 070 04 66	1			Bracket	
24	322 995 00 22	1			Bracket	
	314 995 00 42	1			Clamp	
25	422 078 01 86	1			Clamp	

GROUP

12

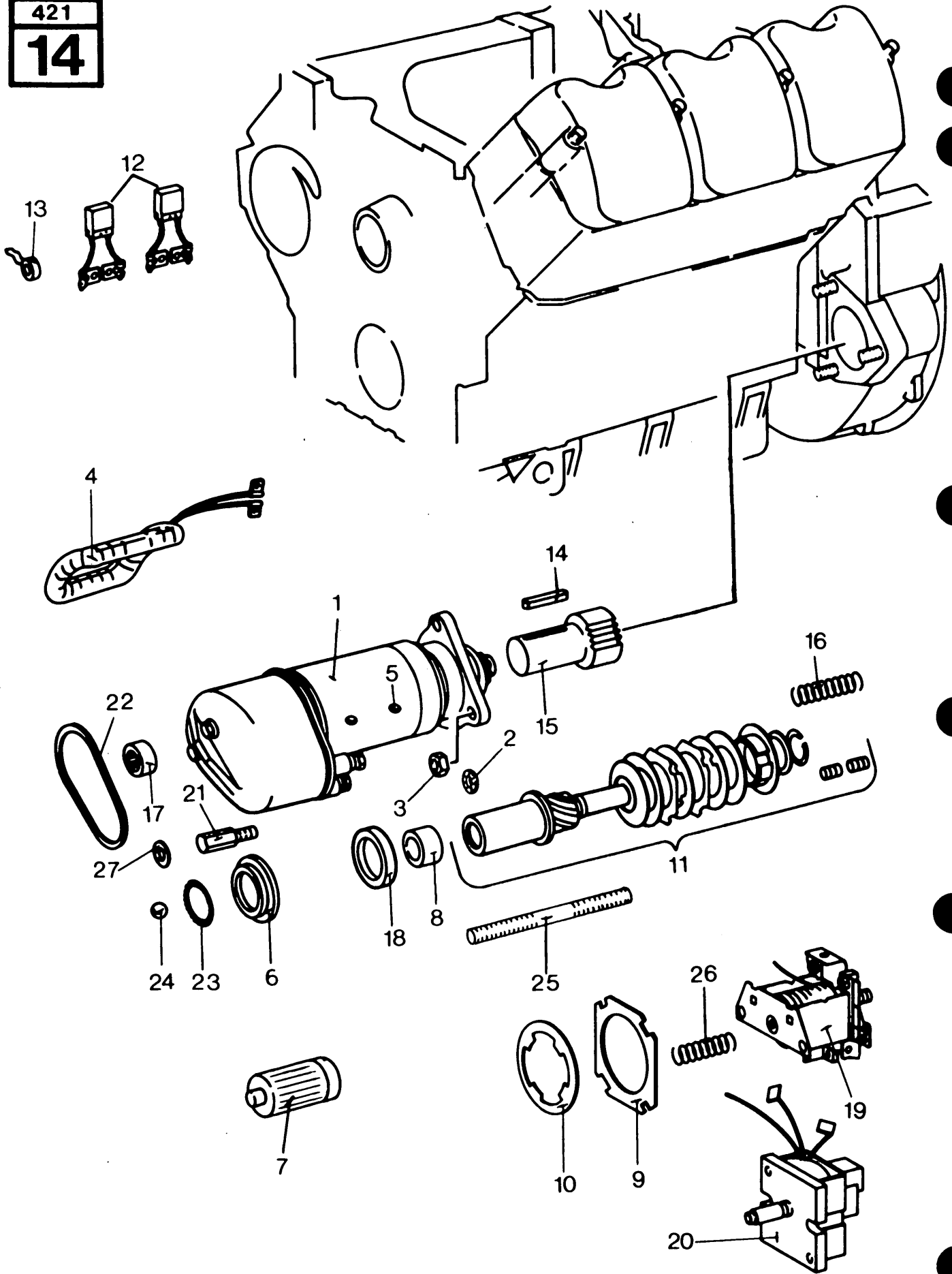




WATER PUMP AND THERMOSTAT  
 POMPE A EAU ET THERMOSTAT  
 WASSERPUMPE UND THERMOSTAT  
 POMPA ACQUA ET TERMOSTATO  
 WATERPOMP EN THERMOSTAAT

Fig.	Mercedes Part No.	Qty.		Code	Description	N.B.
		421	421A			
1	402 200 51 01	1	1		Waterpump assembly	Incl. figs. 12,20 and 35
2	402 200 17 02	1	1		Shaft	
3	NSS	1	1		Housing	
4	000 201 72 19	1	1		Seal ring	
5	000 201 01 97	1	1		Collar	
6	000 201 04 63	1	1		Pressure ring	
7	000472 0055000	1	1		Circlip	
8	403 202 04 14	1	1		Hub	
9	403 200 02 60	1	1		Seal kit	Incl. figs. 4,5,6,12,20,24 and 35
10	423 200 01 04	1	1		Seal repair kit	Incl. figs. 2,4,5,6,11,12,20,24 and 35
11	NSS	1	1		Impeller	
12	403 201 10 80	1	1		Gasket	
13	000137 008204	9	9		Lockwasher	
14	000931 008327	9	9		Hex. cap screw	
15	403 202 13 10	1	1		"V" pulley	
16	403 202 05 42	1	1		Spacer	
17	000933 008147	6	6		Hex. cap screw	
18	000137 008204	6	6		Lockwasher	
19	003 203 74 75	2	2		Thermostat	
20	003 997 57 48	2	2		Seal ring	
21	403 997 03 50	1			Flange	
22	007603 018101	1			Seal ring	
23	355 203 05 08	1			Nipple	
24	917003 040004	1	1		Gasket	
25	912004 010102	2			Lockwasher	
26	000933 010105	2			Hex. cap screw	
27	000137 010201		2		Lockwasher	
28	000933 010095		2		Hex. cap screw	
29	007604 014106		1		Threaded plug	
30	007603 014103		1		Seal ring	
31	301 501 00 09		1		Tube	
32	403 201 06 31		1		Water outlet tube	
	403 201 05 31	1			Water outlet tube	
33	000931 008248	3	3		Hex. cap screw	
34	000137 008204	3	3		Lockwasher	
35	403 201 04 80	1	1		Gasket	

71° G

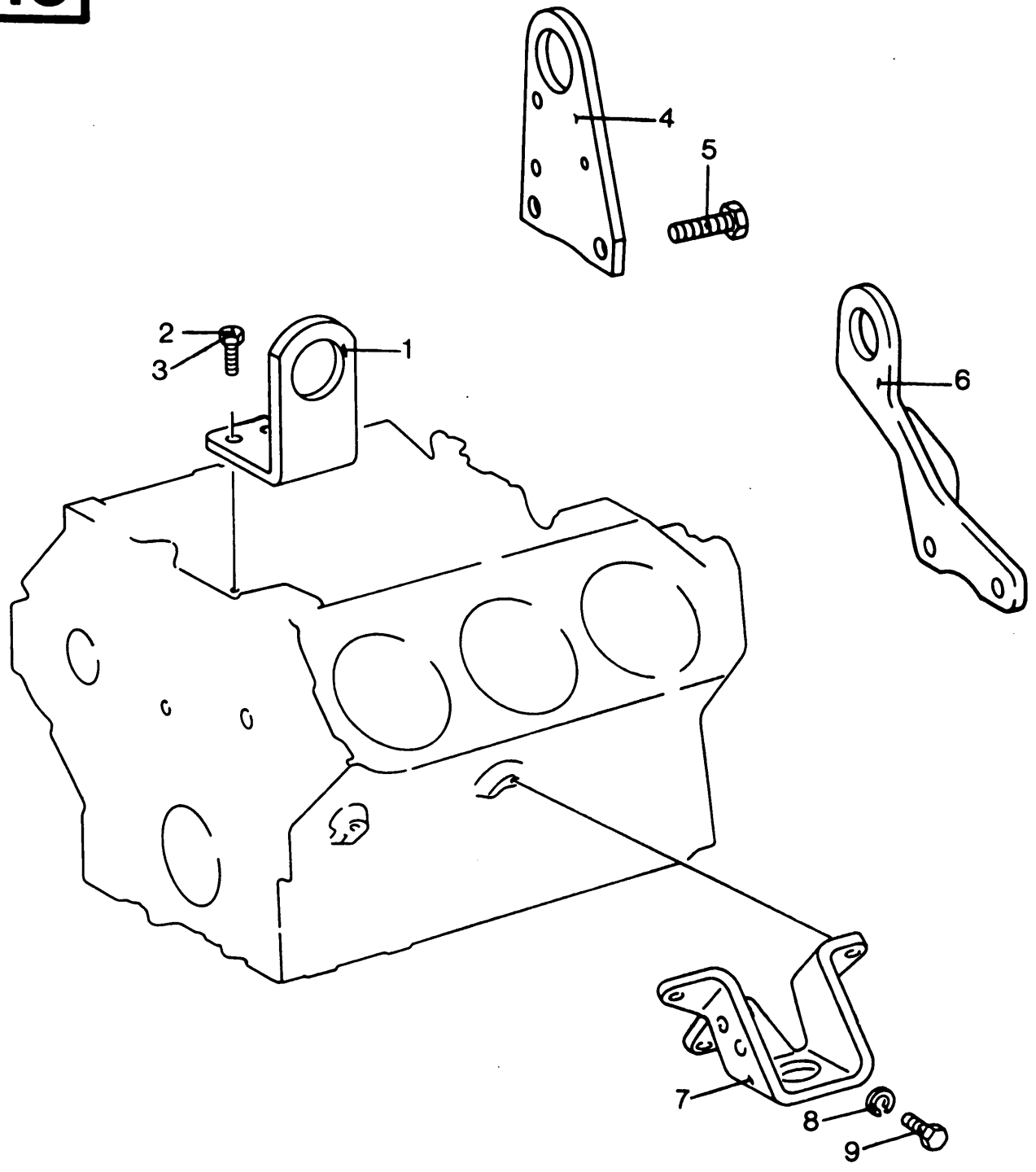


STARTER MOTOR  
 DEMARREUR  
 ANLASSER  
 MOTORINO DI AVVIAMENTO  
 STARTMOTOR

Fig.	Mercedes Part No.	Qty.		Code	Description	N.B.
		421	421A			
1	002 151 77 01	1	1		Starter motor assy.	Incl. all figs.
2	912004 012100	3	3		Lockwasher	
3	000934 012022	3	3		Hex. nut	
4	000 151 48 55	1	1		Coil assembly	
5	000 990 34 30	8	8		Screw	
6	004 997 44 47	1	1		Seal ring	
7	000 151 27 15	1	1		Armature	
8	006 981 90 10	1	1		Bearing	
9	000 151 05 32	5	5		Shim	
10	000 151 04 32	5	5		Shim	
11	000 151 06 33	1	1		Shaft assembly	
12	000 151 72 14	1	1		Brush kit	
13	000 151 08 93	4	4		Spring	
14	006885 006009	1	1		Key	
15	000 151 60 13	1	1		Gear	
16	000 151 18 93	4	4		Spring	
17	000 151 41 50	1	1		Bushing	
18	000 151 40 50	1	1		Bushing	
19	000 152 57 10	1	1		Ignition switch	
20	000 152 58 10	1	1		Ignition switch	
21	000 151 02 70	2	2		Stud	
22	000 151 02 60	1	1		Seal ring	
23	000 151 17 93	1	1		Spring	
24	001 981 43 85	11	11		Ball	
25	000 151 00 70	1	1		Stud	
	000 151 01 70	3	3		Stud	
26	004 993 59 01	1	1		Spring	
27	003 997 80 40	2	2		Seal ring	

GROUP

**14**



ENGINE SUPPORT & LIFTING BRACKETS  
 SUPPORT DE MOTEUR ET YEUX DE LEVAGE  
 MOTORSTÜTZE UND HEBEÖSEN  
 SUPPORTO DEL MOTORE ED OCCHI DI SOLLEVAMENTO  
 MOTORSTEUN EN HEFOGEN

Fig.	Mercedes Part No.	Qty.		Code	Description	N.B.
		421	421A			
1	403 223 08 41	1	1		Lifting bracket	
2	000933 020008	1	1		Hex. cap screw	
3	000933 010105	1	1		Hex. cap screw	
4	422 223 05 41	1			Lifting bracket	
5	000933 01604	1			Hex. cap screw	
6	421 220 00 41		1		Lifting bracket	
7	401 223 05 01	1	1		Engine support	
8	912004 012100	8	8		Lockwasher	
9	000933 012016	8	8		Hex. cap screw	

GROUP  
**15**

INDEX

MERCEDES Part No.	Group	Fig.	MERCEDES Part No.	Group	Fig.	MERCEDES Part No.	Group	Fig.
000090790	10	■	0002017219	13	4	3469970130	7	11
403031640	4	6	0004473180	11	4	3520181882	2	44
0000170517	1	24	0005862609	10	▲	3521870080	10	27
0000171174	1	26	0009903430	14	5	3552030508	13	23
0000172216	1	27	0009905605	10	34	3875011520	3	37
0000173652	1	23	0009908712	10	17	4010100366	3	31
0000173752	1	23	0009951265	11	21	4010101113	3	21
0000173852	1	23	0009973532	2	13	4010102072	3	28
0000173952	1	23	0009975348	2	43	4010140122	3	27
0000174052	1	23	0010171612	1	28	4010181400	3	37
0000174152	1	23	0010173112	1	28	4010301105	4	8
0000174252	1	23	0010178121	1	21	4011400001	8	6
0000174352	1	23	0011883101	7	4	4011400101	8	7
0000174452	1	23	0019814385	14	24	4011401201	9	6
0000174552	1	23	0019892920	2	38	4011410080	8	18
0000174652	1	23	0019908240	5	16	4011410480	9	15
0000174752	1	23	0019974972	11	14	4011422901	8	1
0000174852	1	23	0020170021	1	21	4011423001	8	2
0000174952	1	23	0020960499	10	10	4011800009	7	9
0000175052	1	23	0021517701	14	1	4011800011	7	10
0000175152	1	23	0032037475	13	19	4011800201	6	1
0000175252	1	23	0039975748	13	20	4011800804	6	3
0000175352	1	23	0039978040	14	27	4011800904	6	4
0000175453	1	23	0039978245	3	29	4011800952	6	12
0000175552	1	23	0049935901	14	26	4012230501	15	7
0000178952	1	25	0049974447	14	6	4019900001	7	14
0000180180	1	19	0059972647	3	2	4021800009	7	9
0000180702	1	20	0069819010	14	8	4022001702	13	2
0000530726	5	9	0069971647	2	31	4022005101	13	1
0000745171	11	10	0069972645	2	36	4030100914	2	29
0001510070	14	25	0069974748	10	19	4030104020	1	1
0001510170	14	25	0070740602	12	1	4030104633	3	1
0001510260	14	22	0070741302	12	1	4030105372	3	28
0001510270	14	21	0079977048	2	40	4030105866	3	31
0001510432	14	10	0089975482	11	11	4030108233	3	1
0001510532	15	9	0089977045	7	13	4030108920	1	1
0001510633	14	11	0100749502	12	1	4030110080	2	39
0001510893	14	13	1079910041	2	23	4030110124	2	25
0001511793	14	23	3015010009	13	31	4030110221	2	8
0001511893	14	16	3024900080	9	19	4030110271	2	5
0001512715	14	7	3129900251	5	15	4030150160	3	16
0001514050	14	18	3141800358	11	12	4030150680	3	11
0001514150	14	17	3149950042	12	24	4030150780	3	10
0001514855	14	4	3149950042	12	19	4030160061	1	31
0001516013	14	15	3220700066	12	22	4030160321	1	15
0001517214	14	12	3229950022	12	24	4030160505	1	14
0001525710	14	19	3269971020	2	19	4030160805	1	18
0001525810	14	20	3269971020	1	3	4030170271	1	30
0002010197	13	5	3460170160	1	29	4030181282	2	44
0002010463	13	6	3460170260	1	29	4030301340	4	6

GROUP

98

INDEX

MERCEDES Part No.	Group	Fig.	MERCEDES Part No.	Group	Fig.	MERCEDES Part No.	Group	Fig.
4030301440	4	6	4030550220	5	14	4039900504	12	5
4030301540	4	6	4030700095	11	19	4039900601	1	11
4030301720	4	20	4030700355	12	10	4039900701	1	10
4030301740	4	6	4030701366	12	18	4039900901	7	14
4030301845	4	7	4030705171	11	8	4039910162	2	2
4030301945	4	7	4030707633	12	12	4039930201	7	17
4030302045	4	7	4030707633	12	11	4039940034	4	32
4030302145	4	7	4030707733	12	13	4039950044	3	30
4030302245	4	7	4030707833	12	14	4039950144	3	30
4030310171	4	4	4030707933	12	15	4039970032	7	21
4030310332	4	13	4030708033	12	16	4039970032	3	24
4030310407	4	3	4030708133	12	17	4039970350	13	21
4030310727	4	2	4030740039	12	2	4039970420	2	20
4030320171	4	11	4030770512	12	3	4039970420	2	17
4030320305	4	9	4031402501	8	16	4039970720	1	2
4030320309	4	10	4031411180	8	9	4039970820	3	9
4030350114	4	15	4031411180	9	8	4039970920	2	18
4030351400	4	14	4031420212	8	5	4039970920	2	20
4030380271	4	22	4031420212	9	5	4039971172	3	35
4030380450	4	21	4031420380	8	3	4049875145	10	2
4030382410	4	23	4031420380	9	3	4070350112	4	17
4030382510	4	23	4031800011	7	10	4079976482	12	9
4030382610	4	23	4031800604	6	4	4210100008	2	1
4030382710	4	23	4031801043	2	35	4210301001	4	1
4030382810	4	23	4031801404	6	3	4210301101	4	1
4030500303	4	12	4031801443	2	35	4210301701	4	1
4030500325	5	19	4031801615	6	9	4210500401	5	1
4030500733	5	13	4031801701	6	1	4210500501	5	1
4030501236	5	11	4031802438	7	1	4210701033	12	14
4030510231	1	8	4031810112	6	7	4210701133	12	13
4030510910	2	7	4031810220	6	5	4210701233	12	12
4030511710	2	6	4031840132	7	16	4210701333	12	17
4030520253	3	4	4031840156	7	19	4210701433	12	16
4030530030	1	6	4031840280	7	24	4210701533	12	15
4030530032	1	8	4031860104	6	13	4210900040	11	22
4030530052	5	6	4032000260	13	9	4210980116	10	18
4030530096	5	10	4032010480	13	35	4211310021	10	5
4030530120	5	5	4032010531	13	32	4211400003	10	13
4030530132	1	8	4032010631	13	32	4211400103	10	14
4030530152	5	7	4032011080	13	12	4211410001	9	7
4030530230	1	6	4032020414	13	8	4211410401	10	3
4030530325	5	6	4032020542	13	16	4211420009	10	11
4030530720	5	5	4032021310	13	15	4211420015	10	32
4030530931	1	7	4032230841	15	1	4211420301	9	1
4030531022	5	4	4039900019	9	4	4211420401	9	2
4030531031	1	7	4039900019	8	4	4211800020	10	20
4030531122	5	4	4039900204	4	16	4211870024	10	26
4030531131	1	7	4039900304	3	12	4212200041	15	6
4030540405	5	20	4039900404	3	13	4219900019	10	15
4030541801	5	19	4039900501	1	12	4220160020	1	13

**GROUP  
98**



INDEX

MERCEDES Part No.	Group	Fig.	MERCEDES Part No.	Group	Fig.	MERCEDES Part No.	Group	Fig.
4220300103	4	14	000007008223	2	3	000931012132	9	20
4220780186	12	20	000007008226	2	21	000931016046	10	12
4220780186	12	25	000007008231	4	5	000933006102	3	36
4220900007	11	5	000007016215	2	22	000933006103	12	21
4220900012	11	2	000125008418	11	24	000933008030	12	4
4220900051	11	3	000125008418	3	26	000933008130	3	5
4220900152	11	1	000135008204	9	9	000933008145	3	36
4221440280	10	33	000137008204	9	18	000933008147	11	23
4221800022	10	28	000137008204	13	18	000933008147	13	17
4222230541	15	4	000137008204	13	13	000933008147	7	6
4229870145	8	21	000137008204	10	24	000933008152	3	18
4229870245	8	13	000137008204	13	34	000933008153	4	18
4229970040	10	29	000137008204	8	10	000933008153	10	4
4229970083	10	9	000137008204	3	17	000933008153	2	34
4229970272	10	30	000137008204	4	19	000933008245	6	8
4230100062	2	42	000137008204	2	33	000933010095	13	28
4230100117	3	14	000137008204	7	8	000933010105	15	3
4230100162	2	42	000137008204	3	6	000933010105	13	26
4230100380	1	9	000137010201	13	27	000933010145	7	26
4230110210	4	26	000137010201	8	20	000933012016	15	9
4230110259	2	41	000137010201	7	25	000933016003	3	36
4230300024	4	27	000137012203	11	26	000933020008	15	2
4230300037	4	24	000137016202	3	38	000934006007	3	34
4230300124	4	27	000471024000	5	17	000934008010	10	7
4230300137	4	25	000472005500	13	7	000934008010	3	34
4230300237	4	25	000835012028	3	3	000934012010	9	21
4230300537	4	25	000908014001	11	6	000934012022	14	3
4230300637	4	25	000908022001	1	5	000960012335	2	4
4230301117	4	24	000908030002	2	28	000961012097	11	25
4230301517	4	24	000908030002	2	15	005401999012	2	24
4230301817	4	24	000912008031	6	11	005401999012	5	12
4230370016	4	28	000931008049	3	25	006319010302	12	8
4230370017	4	29	000931008177	3	25	006885006009	14	14
4230370020	4	31	000931008204	1	16	007603008103	11	9
4230370117	4	29	000931008207	9	10	007603008109	11	9
4230370118	4	30	000931008207	8	11	007603012110	9	14
4230370120	4	31	000931008220	8	12	007603014102	7	15
4230370216	4	28	000931008220	9	11	007603014102	2	10
4230370520	4	31	000931008221	7	7	007603014102	7	22
4230370620	4	31	000931008248	9	17	007603014102	3	32
4230370720	4	31	000931008248	13	33	007603014103	13	30
4230500026	5	2	000931008251	11	8	007603014104	11	7
4230500327	5	3	000931008254	1	17	007603014104	11	17
4230500427	5	3	000931008314	6	6	007603014106	10	22
4230700466	12	23	000931008327	13	14	007603018101	13	22
4232000104	13	10	000931010147	12	7	007603018101	2	12
6171870180	10	23	000931010244	8	19	007603018101	7	12
00013708204	10	6	000931010332	7	27	007603022103	2	27
00093301604	15	5	000931010369	12	6	007603022103	1	4
99901008004	10	35	000931010369	5	18	007603026104	10	31

GROUP

98

INDEX

MERCEDES Part No.	Group	Fig.	MERCEDES Part No.	Group	Fig.
007603026105	7	18			
007603026105	2	14			
007603026305	3	23			
007603026400	7	20			
007603030103	2	16			
007603038101	3	20			
007604010102	9	12			
007604010102	8	15			
007604010102	2	46			
007604012102	9	13			
007604014106	13	29			
007604014106	2	9			
007604014106	7	23			
007604038200	3	19			
007605022002	2	28			
080705016003	11	20			
900195014205	7	2			
900421008002	8	17			
900421008004	9	16			
900421008004	2	30			
900421008004	3	7			
900421010002	3	8			
900421010002	8	8			
900421012006	3	15			
900421026000	3	22			
900421026000	7	3			
912004006102	3	38			
912004006102	3	38			
912004008102	3	33			
912004010102	13	25			
912004012100	15	8			
912004012100	14	2			
914126008017	10	25			
914126008049	6	15			
915009008000	11	18			
915017010201	11	15			
915036010100	11	16			
915036010100	10	21			
915048018000	2	11			
915052008000	11	13			
916017025000	10	1			
916017025000	2	45			
916017032000	8	22			
916017032000	8	14			
916017070000	10	8			
917003026000	7	5			
917003036002	6	14			
917003040004	13	24			
999900010000	10	16			

GROUP

98

# PARTS BULLETIN

DATE Sept. 1984

REFERENCE 497049/7 PB 1

SUBJECT Europ. Parts Catalogue Bulletin

**MERCEDES BENZ - ENGINES**

**MODELS OM 421 and 421A (Turbo)**

**CATALOGUE 497049/7**

Group	Fig.	Old Mercedes Part no.	Qty.		New Mercedes Part no.	Qty.		Code	Description	N.B.
			421	421A		421	421A			
3	1	403 010 46 33 403 010 82 33	1	1	<b>403 010 94 33</b>	1	1		Delete Timing housing	Incl. figs. 3,4,5,6,7 &8
11	<b>NEW DRAWING AND GROUP WITH CORRECTION</b>									
13		403 201 06 31 403 201 05 31	1	1	<b>403 201 00 31</b>	1	1		Water outlet tube Water outlet tube	For TF only For 8080 only

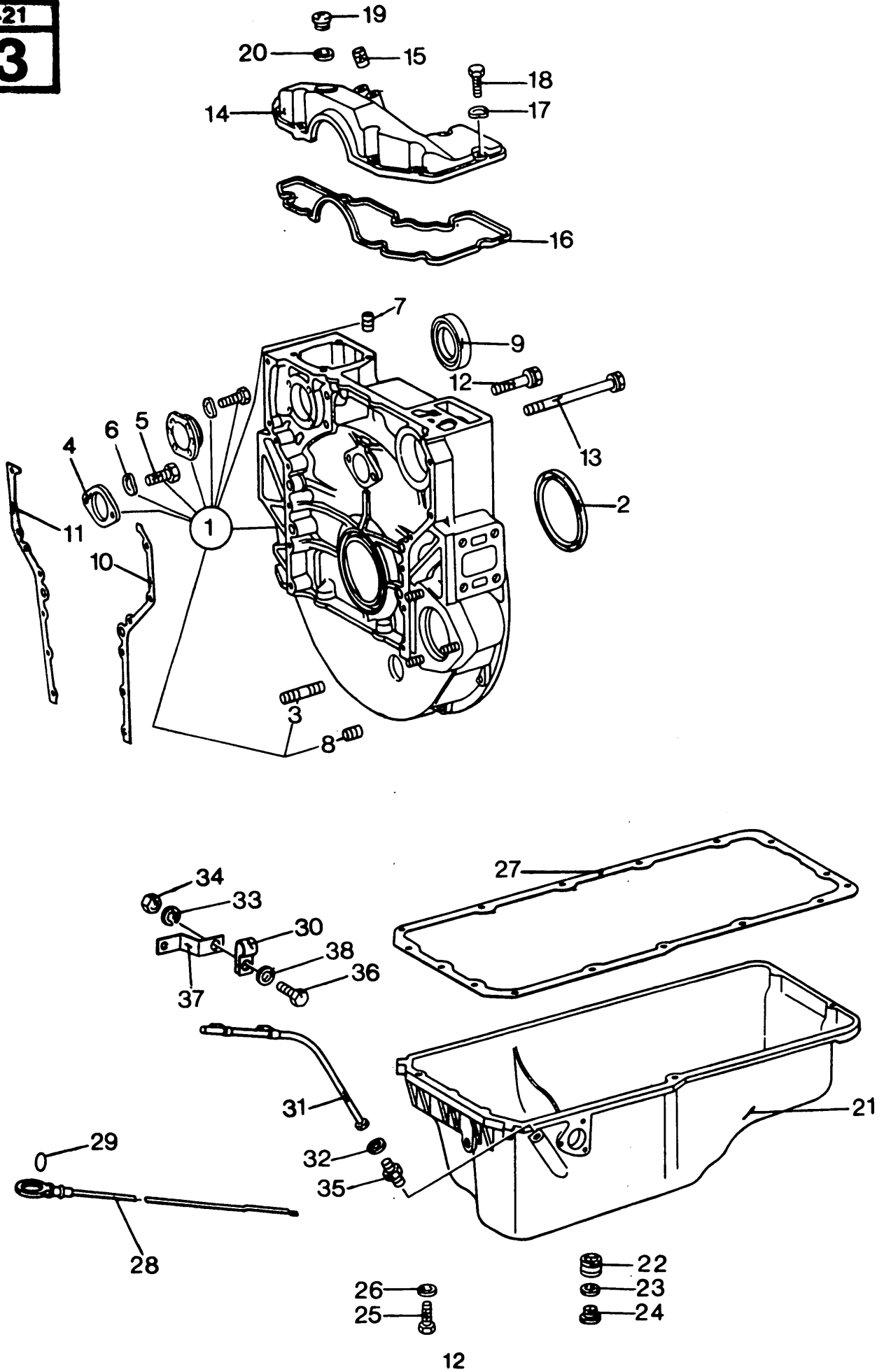
- THE INFORMATION PRINTED IN BOLD TYPE IS NEW
- LES INFORMATIONS EN CARACTERES GRAS SONT NOUVELLES
- DIE IN FETTEM DRUCK GEDRUKTEN AUSKUNFTE SIND NEU
- LE INFORMAZIONE IN CARATTERI IN GRASSETTO SONO NUOVE
- DE VET GEDRUKTE INFORMATIE IS NIEUW

OIL SUMP AND TIMING HOUSING  
 CARTER ET COUVERCLE DE DISTRIBUTION  
 ÖLWANNE UND STEUERUNGSGEHÄUSE  
 COPPA OLIO E COPERCHI  
 OLIEPAN EN DISTRIBUTIEDEKSEL

Fig.	Mercedes Part No.	Qty.		Code	Description	N.B.
		421	421A			
1	403 010 94 33	1	1		Timing housing assy.	Incl. figs. 3,4,5,6,7 and 8
2	005 997 26 47	1	1		Seal ring	
3	000835 012028	3	3		Stud	
4	403 052 02 53	1	1		Flange	
5	000933 008130	2	2		Hex. cap screw	
6	000137 008204	2	2		Lockwasher	
7	900421 008004	15	15		Stud	
8	900 421 010002	15	15		Stud	
9	403 997 08 20	1	1		Cover	
10	403 015 07 80	1	1		Gasket	
11	403 015 06 80	1	1		Gasket	
12	403 990 03 04	10	10		Hex. cap screw	
13	403 990 04 04	2	2		Hex. cap screw	
14	423 010 01 17	1	1		Cover	
15	900421 012006	2	2		Stud	
16	403 015 01 60	1	1		Gasket	
17	000137 008204	8	8		Lockwasher	
18	000933 008152	8	8		Hex. cap screw	
19	007604 038200	1	1		Screw plug	
20	007603 038101	1	1		Seal ring	
21	401 010 11 13	1	1		Oil sump	
22	900421 026000	1	1		Stud	
23	007603 026305	1	1		Seal ring	
24	403 997 00 32	1	1		Screw plug	
25	000931 008049	10	10		Hex. cap screw	
	000931 008177	4	4		Hex. cap screw	
26	000125 008418	14	14		Washer	
27	401 014 01 22	1	1		gasket	
28	403 010 53 72		1		Dipstick	
	401 010 20 72	1			Dipstick	
29	003 997 82 45		1		Seal ring	
30	403 995 00 44		1		Clamp	
	403 995 01 44	1			Clamp	
31	403 010 58 66		1		Guiding tube	
	401 010 03 66	1			Guiding tube	
32	007603 014102	1	1		Seal ring	
33	912004 008102		1		Lockwasher	
34	000934 008010		1		Hex. nut	
	000934 006007	1	1		Hex. nut	
35	403 997 11 72	1	1		Nipple	
36	000933 008145		1		Hex. cap screw	
	000933 006102	1	2		Hex. cap screw	
	000933 016003		1		Hex. cap screw	

GROUP

3



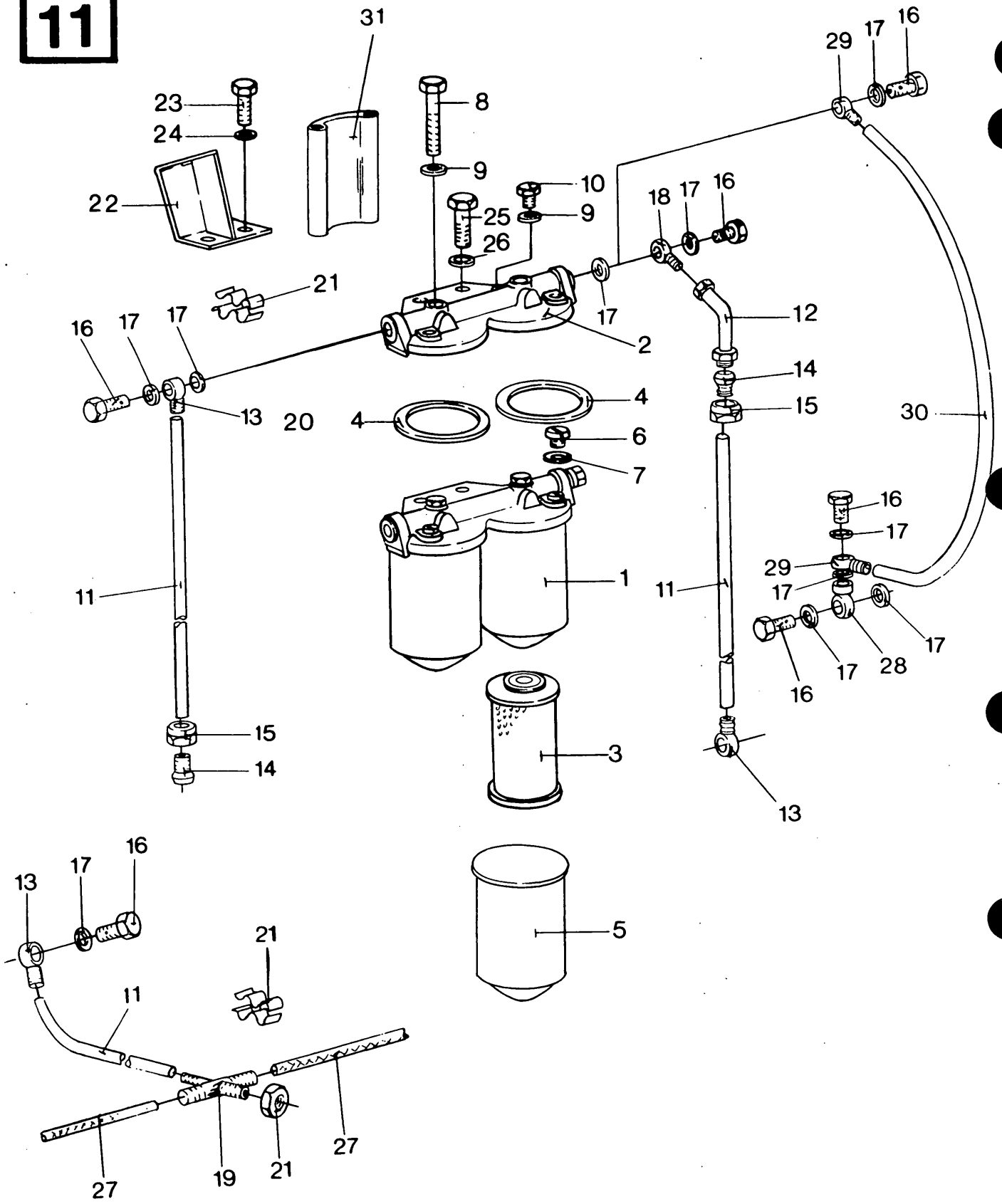
TURBO CHARGER  
 TURBOCOMPRESSEUR  
 TURBOLADER  
 TURBOCOMPRESSORE  
 TURBOCOMPRESSOR

FOR OM 421A (Turbo) ONLY

Fig.	Mercedes Part No.	Qty.		Code	Description	N.B.
		421	421A			
1	916017 025000		1		Strap	
2	404 987 51 45		1		Collar	
3	421 141 04 01		1		Air inlet tube	
4	000933 008153		4		Hex. cap screw	
5	421 131 00 21		1		Bracket	
6	000137 08204		2		Lockwasher	
7	000934 008010		2		Hex. nut	
8	916017 070000		1		Strap	
9	422 997 00 83		1		Tube	
10	002 096 04 99		1		Turbocharger assembly	
▲	000 586 26 09		1		Seal repair kit	
■	000 09 07 90		1		Overhaul kit	Incl. all turning parts
11	421 142 00 09		1		Exhaust collector	
12	000931 016046		2		Hex. cap screw	
13	421 140 00 03		1		Exhaust pipe	Left-hand
14	421 140 01 03		1		Exhaust pipe	Right-hand
15	421 990 00 19		4		Hex. cap screw	
16	999900 010000		4		Hex. nut	
17	000 990 87 12		8		Hex. cap screw	
18	421 098 01 16		1		Tube	
19	006 997 47 48		2		Seal ring	
20	421 180 00 20		1		Oil tube	
21	915036 010100		1		Hollow screw	
22	007603 014106		2		Seal ring	
23	617 187 01 80		1		Gasket	
24	000137 008204		4		Lockwasher	
25	914126 008017		4		Hex. cap screw	
26	421 187 00 24		1		Oil return elbow	
27	352 187 00 80		1		Gasket	
28	422 180 00 22		1		Oil pipe	
29	422 997 00 40		2		Seal ring	
30	422 997 02 72		1		Niple	
31	007603 026104		1		Seal ring	
32	421 142 00 15		1		Ring	
33	422 144 02 80		1		Gasket	
34	000 990 56 05		6		Stud	
35	99901 008004		6		Hex. nut	

GROUP

**10**



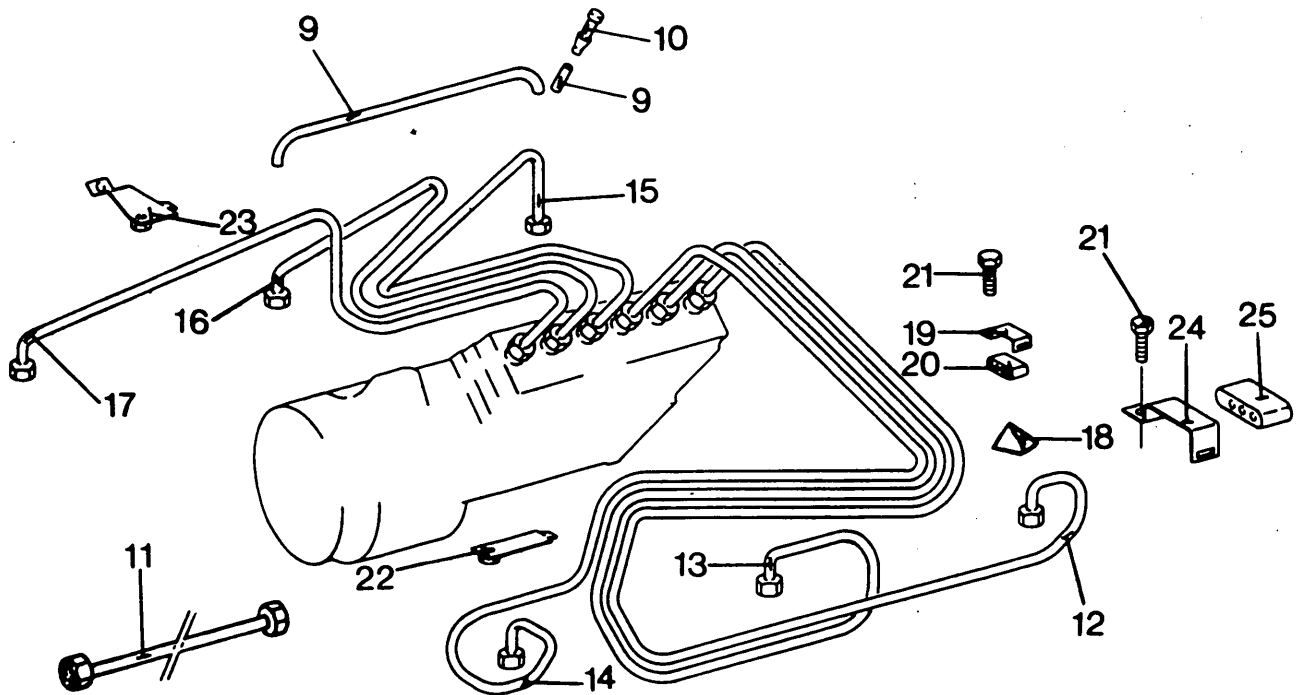
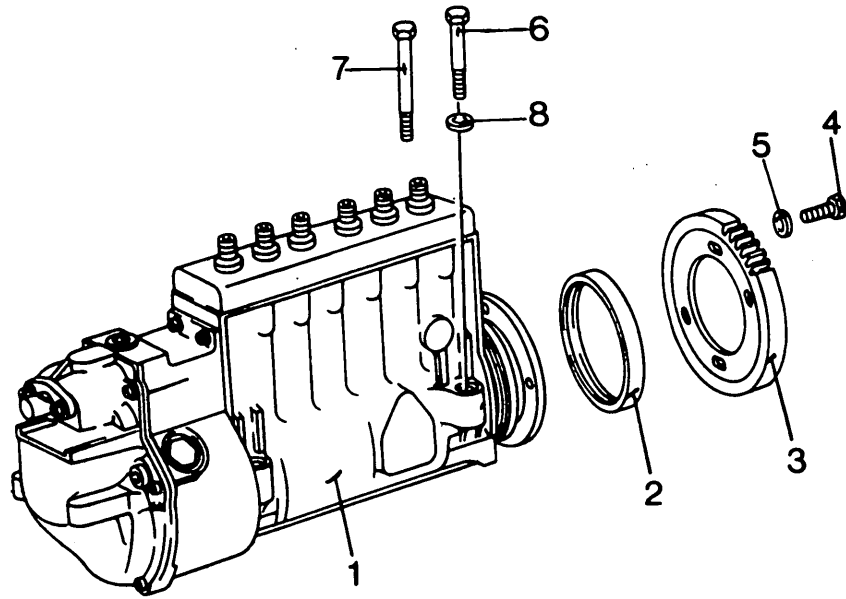
FUEL FILTER  
 FILTRE A COMBUSTIBLE  
 KRAFTSTOFFFILTER  
 FILTRO COMBUSTIBILE  
 BRANDSTOFFFILTER

Fig.	Mercedes Part No.	Qty.		Code	Description	N.B.
		421	421A			
1	422 090 01 52	1	1		Fuel filter assembly	
2	422 092 01 08	1	1		Cover	
3	422 090 00 51	2	2		<b>Fuel filter element kit</b>	<b>S.N.H. Order Ref. 450666 0</b> Incl. fig. 4
4	000 447 31 80	2	2		Seal ring	
5	422 090 00 07	2	2		Housing	
6	000908 014001	2	2		Threaded plug	
7	007603 014104	2	2		Seal ring	
8	000931 008251	2	2		Hex. cap screw	
	403 070 51 71		1		Hex. cap screw	
9	007603 008109	3	3		Seal ring	
	007603 008103		2		Seal ring	
10	000 074 51 71	1	1		Screw plug	
11	008 997 54 82	3	2		Hose	Order by the meter
12	314 180 03 58	1			Elbow	
13	915052 008000	3	1		Banjo nipple	
14	001 997 49 72	2	1		Ferrule	
15	915017 010201	2	1		Jam nut	
16	915036 010100	3	4		Hollow screw	
17	007603 014104	AR	AR		Seal ring	
18	915009 008000	1			Banjo nipple	
19	403 070 00 95	1	1		Nipple	
20	080705 016003	1	1		Coupler nut	
21	000 995 12 65	1			Clamp	
22	421 090 01 41	1			Support	
23	000933 008147	3	2		Hex. cap screw	
24	000125 008418	3	2		Washer	
25	000961 012097	2			Hex. cap screw	
	000961 012122		2		Hex. cap screw	
26	000137 012203	2			Lockwasher	
27	407 997 64 82	2	2		Hose	Order by the meter
28	000 990 03 88		1		Banjo nipple	
29	915052 008000		2		Banjo nipple	
30	008 997 54 82		1		Hose	Order by the meter
31	421 090 00 40		1		Support	

GROUP

**11**





WATER PUMP AND THERMOSTAT  
 POMPE A EAU ET THERMOSTAT  
 WASSERPUMPE UND THERMOSTAT  
 POMPA ACQUA ET TERMOSTATO  
 WATERPOMP EN THERMOSTAAT

Fig.	Mercedes Part No.	Qty.		Code	Description	N.B.
		421	421A			
1	402 200 51 01	1	1		Waterpump assembly	Incl. figs. 12,20 and 35
2	402 200 17 02	1	1		Shaft	
3	NSS	1	1		Housing	
4	000 201 72 19	1	1		Seal ring	
5	000 201 01 97	1	1		Collar	
6	000 201 04 63	1	1		Pressure ring	
7	000472 0055000	1	1		Circlip	
8	403 202 04 14	1	1		Hub	
9	403 200 02 60	1	1		Seal kit	Incl. figs. 4,5,6,12,20,24 and 35
10	423 200 01 04	1	1		Seal repair kit	Incl. figs. 2,4,5,6,11,12,20,24 and 35
11	NSS	1	1		Impeller	
12	403 201 10 80	1	1		Gasket	
13	000137 008204	9	9		Lockwasher	
14	000931 008327	9	9		Hex. cap screw	
15	403 202 13 10	1	1		"V" pulley	
16	403 202 05 42	1	1		Spacer	
17	000933 008147	6	6		Hex. cap screw	
18	000137 008204	6	6		Lockwasher	
19	003 203 74 75	2	2		Thermostat	71° G
20	003 997 57 48	2	2		Seal ring	
21	403 997 03 50	1	1		Flange	
22	007603 018101	1	1		Seal ring	
23	355 203 05 08	1	1		Nipple	
24	917003 040004	1	1		Gasket	
25	912004 010102	2	2		Lockwasher	
26	000933 010105	2	2		Hex. cap screw	
27	000137 010201		2		Lockwasher	
28	000933 010095		2		Hex. cap screw	
29	007604 014106		1		Threaded plug	
30	007603 014103		1		Seal ring	
31	301 501 00 09		1		Tube	
32	403 201 06 31	1	1		Water outlet tube	For TF only
	403 201 00 31	1			Water outlet tube	For 8080 only
33	000931 008248	3	3		Hex. cap screw	
34	000137 008204	3	3		Lockwasher	
35	403 201 04 60	1	1		Gasket	

GROUP

**13**

